


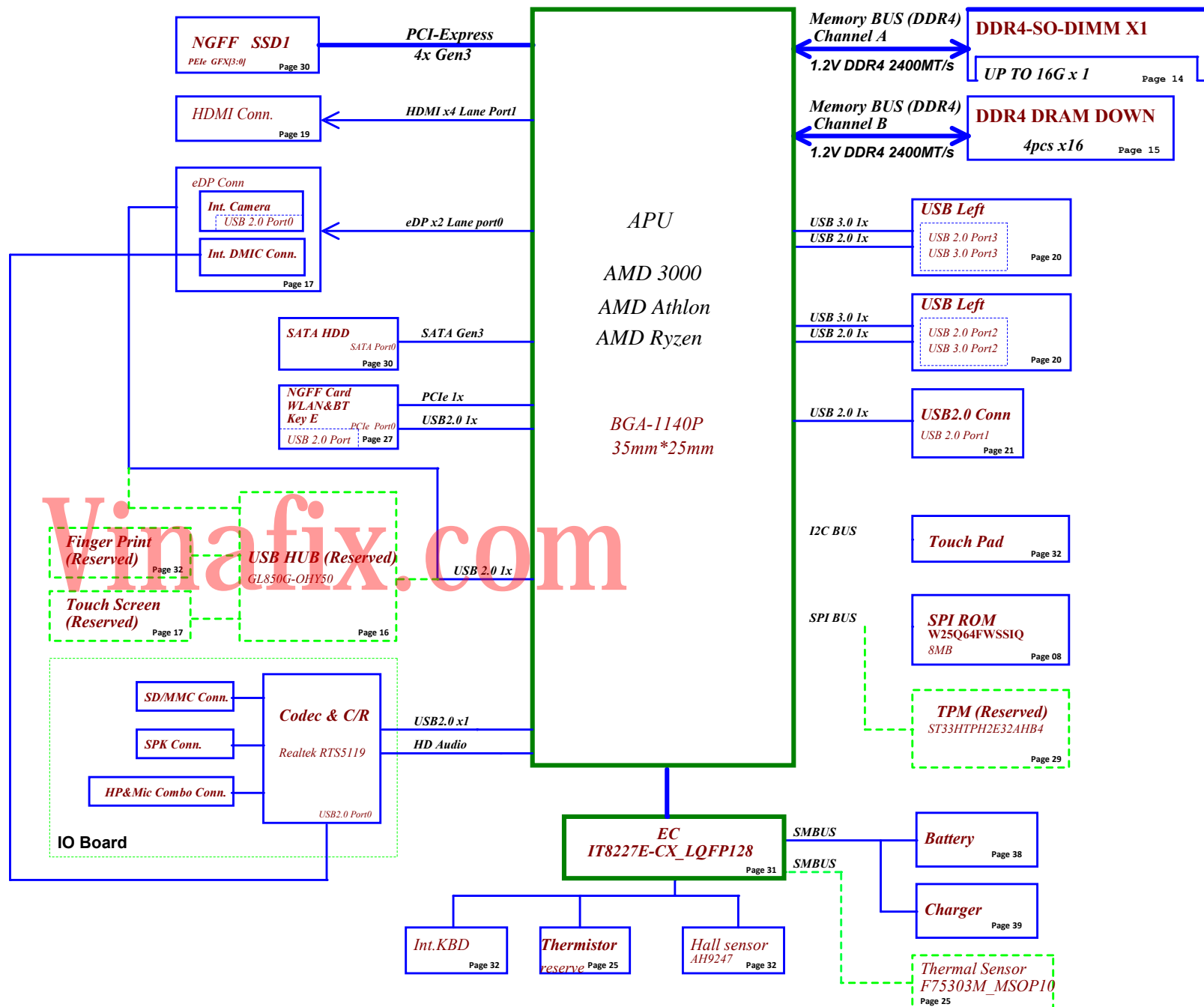
LCFC Confidential

NM_D151 M/B Schematics Document

2019-12-05

Vinafix.com REV:1.0

Security Classification		LC Future Center Secret Data		Title			
Issued Date	2013/08/15	Deciphered Date	2013/08/15	Cover Page			
THIS SHEET OF ENGINEERING DRAWING IS THE PROPRIETARY PROPERTY OF LC FUTURE CENTER. AND CONTAINS CONFIDENTIAL AND TRADE SECRET INFORMATION. THIS SHEET MAY NOT BE TRANSFERRED FROM THE CUSTODY OF THE COMPETENT DIVISION OF R&D DEPARTMENT EXCEPT AS AUTHORIZED BY LC FUTURE CENTER. NEITHER THIS SHEET NOR THE INFORMATION IT CONTAINS MAY BE USED BY OR DISCLOSED TO ANY THIRD PARTY WITHOUT PRIOR WRITTEN CONSENT OF LC FUTURE CENTER.				Size	Document Number	Rev	
				Custom	GV451	1.0	
Date:				Thursday, December 05, 2019		Sheet	1 of 44




State \ power plane	B+ (+20VSB) +3VL +5VLP	+5VALW +3VALW (+3VALW_APU) +1.8VALW +0.9VALW	+1.2V	+5VS +3VS +1.8VS +0.9VS +0.6VS +2.5VS +VDDC_VDD +VDDCR_SOC +VDDC +VDDCI +3VGS +1.8VGS +1.35VGS
S0	O	O	O	O
S3	O	O	O	X
S5 S4/AC	O	O	X	X
S5 S4/ Battery only	O	X	X	X
S5 S4/AC & Battery don't exist	X	X	X	X

I2C Control Table

APU I2C address

SMBUS Control Table

Security Classification		LC Future Center Secret Data		Title			
Issued Date	2013/08/15	Deciphered Date	2013/08/15	Notes List			
THIS SHEET OF ENGINEERING DRAWING IS THE PROPRIETARY PROPERTY OF LC FUTURE CENTER, AND CONTAINS CONFIDENTIAL AND TRADE SECRET INFORMATION. THIS SHEET MAY NOT BE TRANSFERRED FROM THE CUSTODY OF THE COMPETENT DIVISION OF R&D DEPARTMENT EXCEPT AS AUTHORIZED BY LC FUTURE CENTER. NEITHER THIS SHEET NOR THE INFORMATION IT CONTAINS MAY BE USED BY OR DISCLOSED TO ANY THIRD PARTY WITHOUT PRIOR WRITTEN CONSENT OF LC FUTURE CENTER.				Size Cuslin		Document Number GV451	
				Date: Thursday, December 05, 2019		Sheet 3 of 44 Rev 1.0	

M.2 SSD1

M.2 SSD1

WLAN

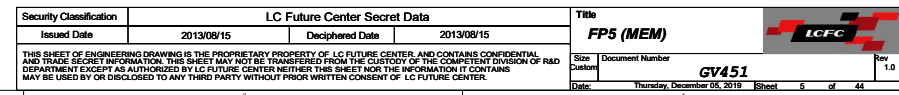
WLAN

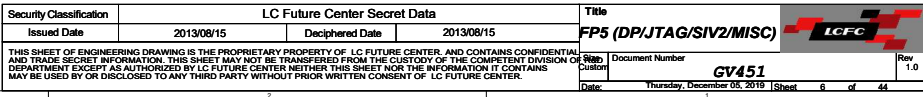
HDD

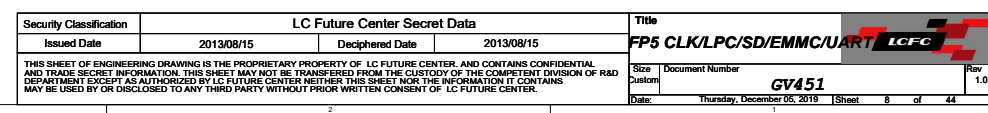
HDD

Vinafix.com

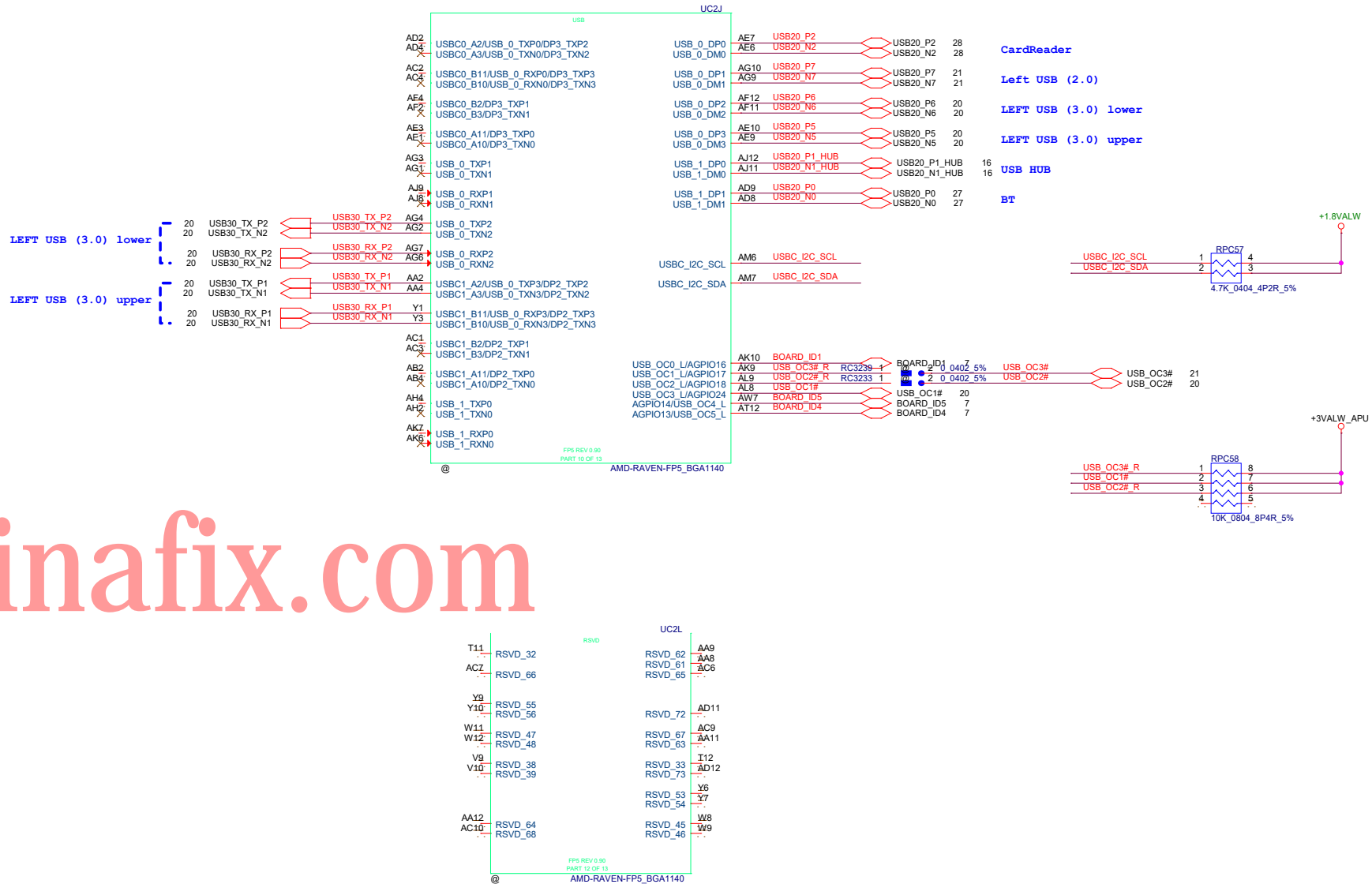
Security Classification		LC Future Center Secret Data		Title	
Issued Date	2013/08/15	Deciphered Date	2013/08/15	FP5 (PCIE SATA I/F)	
THIS SHEET OF ENGINEERING DRAWING IS THE PROPRIETARY PROPERTY OF LC FUTURE CENTER, AND CONTAINS CONFIDENTIAL AND TRADE SECRET INFORMATION. THIS SHEET MAY NOT BE TRANSFERRED FROM THE CUSTODY OF THE COMPETENT DIVISION OF R&D DEPARTMENT EXCEPT AS AUTHORIZED BY LC FUTURE CENTER. NEITHER THIS SHEET NOR THE INFORMATION IT CONTAINS MAY BE USED BY OR DISCLOSED TO ANY THIRD PARTY WITHOUT PRIOR WRITTEN CONSENT OF LC FUTURE CENTER.				Size Custom	Document Number GV451
				Date: Thursday, December 05, 2019	Sheet 4 of 44





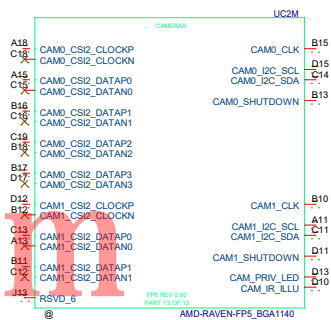


Vinafix.com

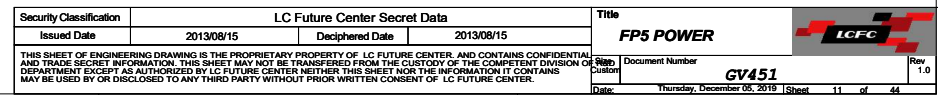


Security Classification		LC Future Center Secret Data		Title	
Issued Date	2013/08/15	Deciphered Date	2013/08/15	FP5 USB/WIFI	
THIS SHEET OF ENGINEERING DRAWING IS THE PROPRIETARY PROPERTY OF LC FUTURE CENTER, AND CONTAINS CONFIDENTIAL AND TRADE SECRET INFORMATION. THIS SHEET MAY NOT BE TRANSFERRED FROM THE CUSTODY OF THE COMPETENT DIVISION OF R&D DEPARTMENT EXCEPT AS AUTHORIZED BY LC FUTURE CENTER. NEITHER THIS SHEET NOR THE INFORMATION IT CONTAINS MAY BE USED BY OR DISCLOSED TO ANY THIRD PARTY WITHOUT PRIOR WRITTEN CONSENT OF LC FUTURE CENTER.				Size Custom	Document Number
				GV451	
				Date:	Thursday, December 05, 2019
				Sheet	9 of 44

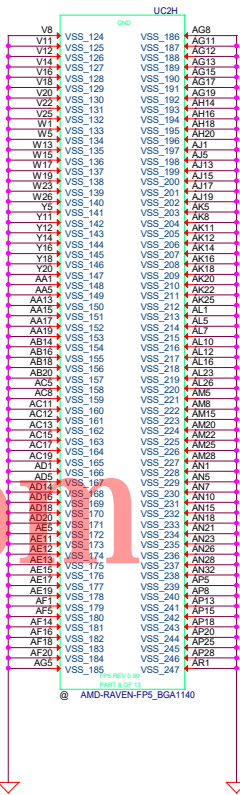
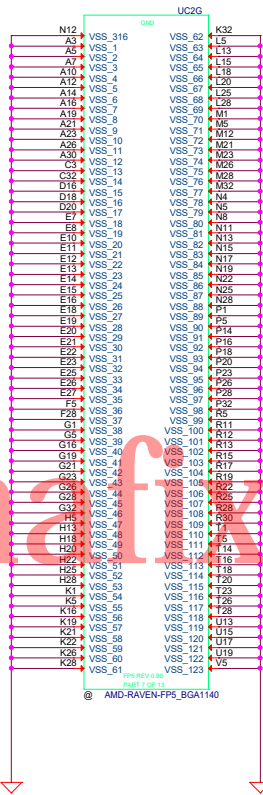
Vinafix.com

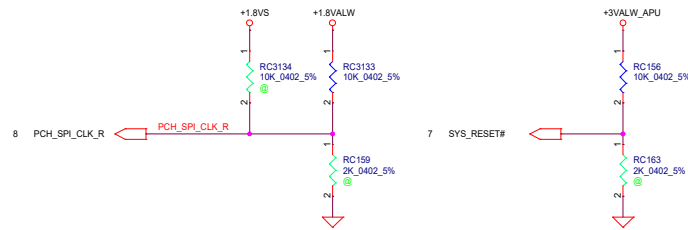


Security Classification	LC Future Center Secret Data			Title	
Issued Date	2013/08/15	Deciphered Date	2013/08/15	FP5 CAM	
THIS SHEET OF ENGINEERING DRAWING IS THE PROPRIETARY PROPERTY OF LC FUTURE CENTER, AND CONTAINS CONFIDENTIAL AND TRADE SECRET INFORMATION. THIS SHEET MAY NOT BE TRANSFERRED FROM THE CUSTODY OF THE COMPETENT DIVISION OF R&D DEPARTMENT EXCEPT AS AUTHORIZED BY LC FUTURE CENTER. NEITHER THIS SHEET NOR THE INFORMATION IT CONTAINS MAY BE USED BY OR DISCLOSED TO ANY THIRD PARTY WITHOUT PRIOR WRITTEN CONSENT OF LC FUTURE CENTER.				Size C	Document Number GV451
				Date Thursday, December 05, 2019	Sheet 10 of 44



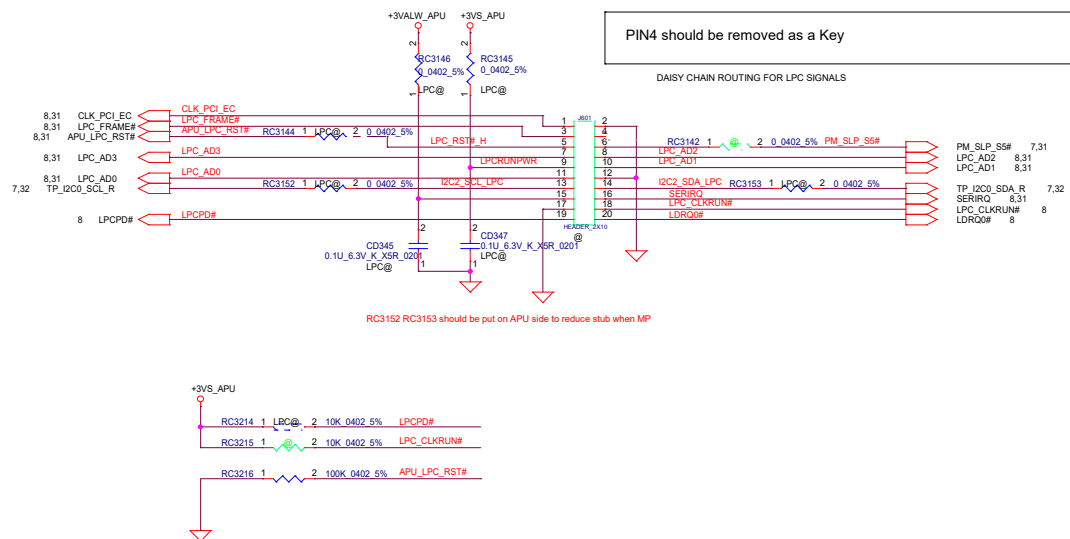
Vinafix.com



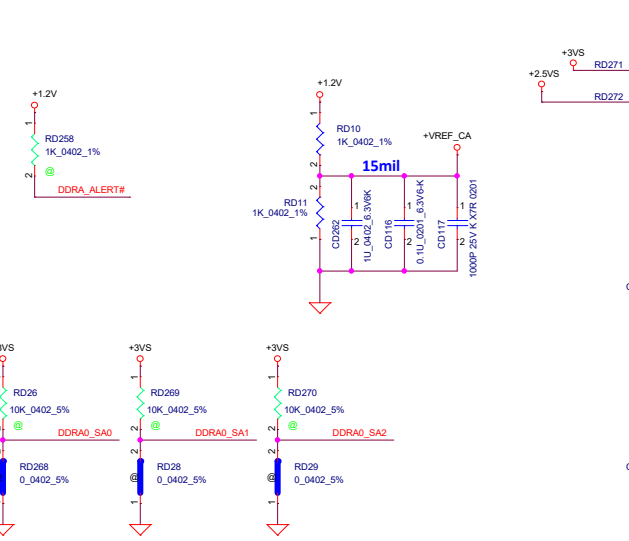
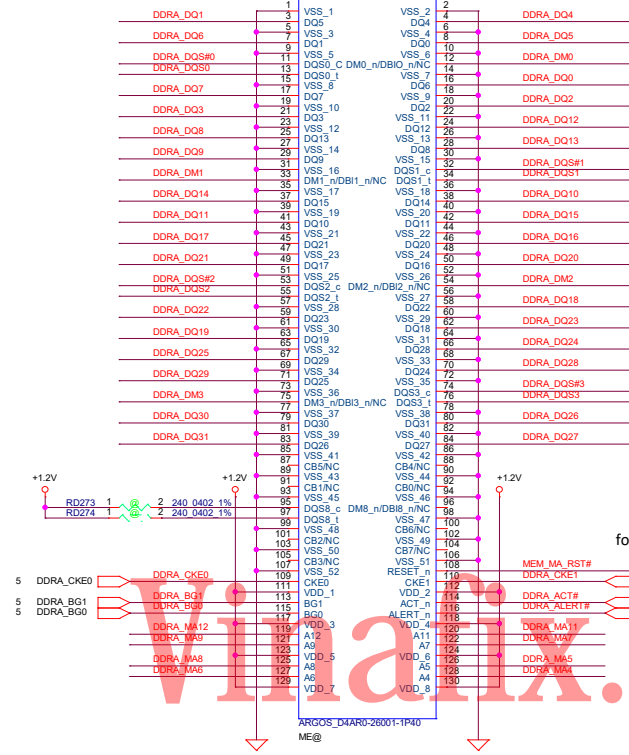


STRAP PINS	SYS_RESET#
PCH_SPI_CLK	1:USE 48MHZ CRYSTAL CLOCK AND GENERATE BOTH INTERNAL AND EXTERNAL CLOCKS (DEFAULT) 0:USE 100MHZ PCIE CLOCK AS REFERENCE CLOCK AND GENERATE INTERNAL CLOCKS ONLY
SYS_RESET#	1:NORMAL RESET MODE (DEFAULT) 0:SHORT RESET MODE

Vinafix.com
LPC ROM EMULATOR HEADER



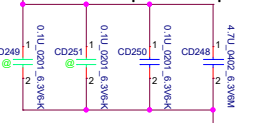
update JDDR1 symbol 1129



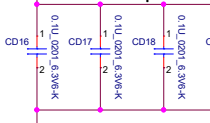
for MEM_MB_RST# overshoot issue

Layout Note: Place near JDDR1

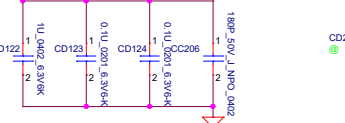
follow CRB 1pcs 4.7uf + 1pcs 0.1uf



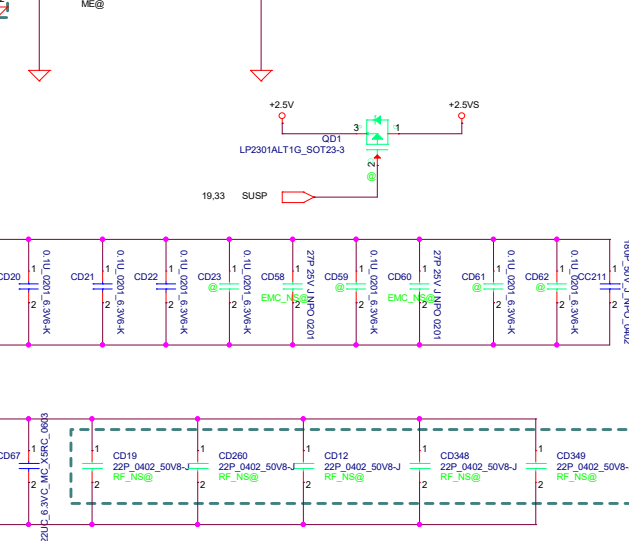
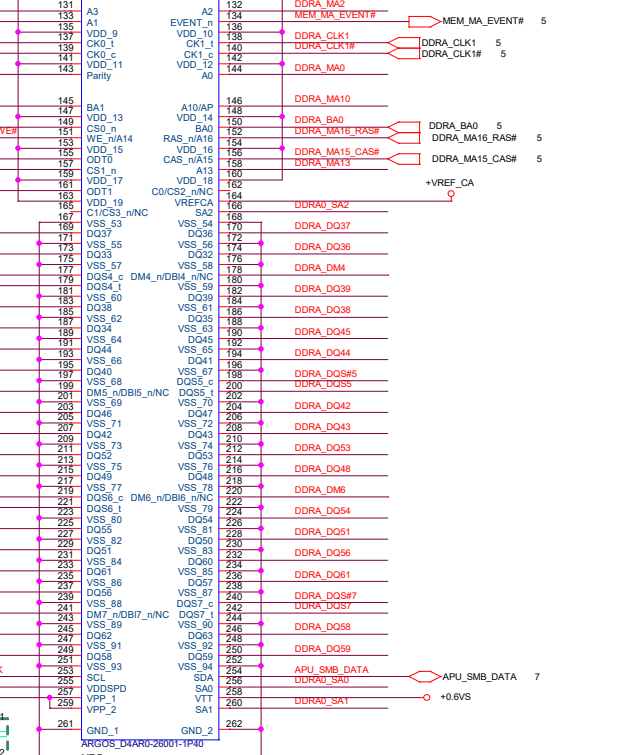
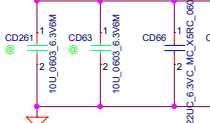
follow CRB 6pcs 0.1uf



follow CRB 1pcs 1uf + 2pcs 0.1uf + 1pcs 180pf



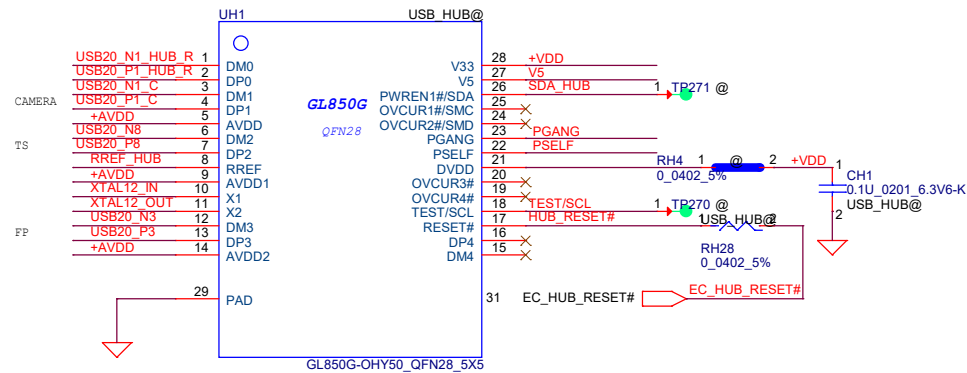
follow CRB 6pcs 0.1uf



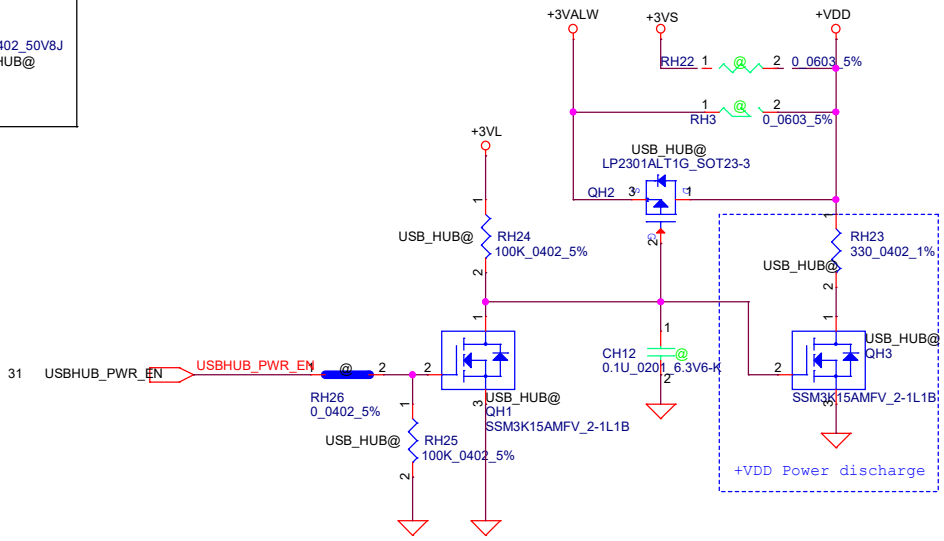
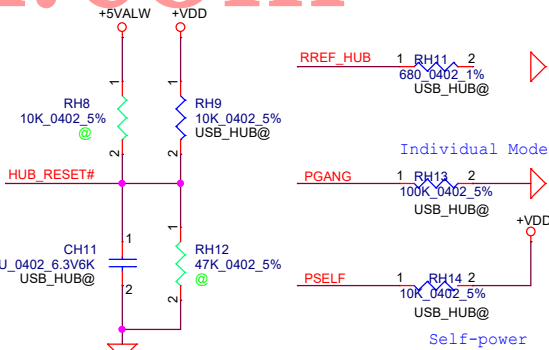
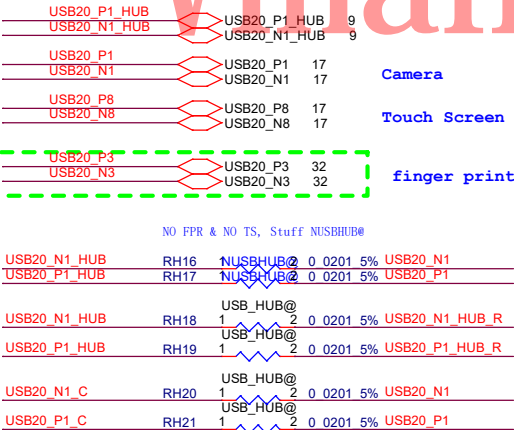
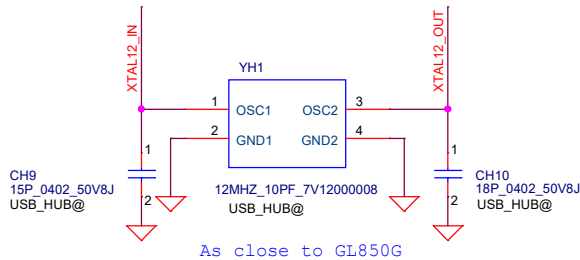
Swap Table

Pin Name	Net Name
DQ0	DDR4_DQ0
DQ1	DDR4_DQ1
DQ2	DDR4_DQ2
DQ3	DDR4_DQ3
DQ4	DDR4_DQ4
DQ5	DDR4_DQ5
DQ6	DDR4_DQ6
DQ7	DDR4_DQ7
DQ8	DDR4_DQ8
DQ9	DDR4_DQ9
DQ10	DDR4_DQ10
DQ11	DDR4_DQ11
DQ12	DDR4_DQ12
DQ13	DDR4_DQ13
DQ14	DDR4_DQ14
DQ15	DDR4_DQ15
DQ16	DDR4_DQ16
DQ17	DDR4_DQ17
DQ18	DDR4_DQ18
DQ19	DDR4_DQ19
DQ20	DDR4_DQ20
DQ21	DDR4_DQ21
DQ22	DDR4_DQ22
DQ23	DDR4_DQ23
DQ24	DDR4_DQ24
DQ25	DDR4_DQ25
DQ26	DDR4_DQ26
DQ27	DDR4_DQ27
DQ28	DDR4_DQ28
DQ29	DDR4_DQ29
DQ30	DDR4_DQ30
DQ31	DDR4_DQ31
DQ32	DDR4_DQ32
DQ33	DDR4_DQ33
DQ34	DDR4_DQ34
DQ35	DDR4_DQ35
DQ36	DDR4_DQ36
DQ37	DDR4_DQ37
DQ38	DDR4_DQ38
DQ39	DDR4_DQ39
DQ40	DDR4_DQ40
DQ41	DDR4_DQ41
DQ42	DDR4_DQ42
DQ43	DDR4_DQ43
DQ44	DDR4_DQ44
DQ45	DDR4_DQ45
DQ46	DDR4_DQ46
DQ47	DDR4_DQ47
DQ48	DDR4_DQ48
DQ49	DDR4_DQ49
DQ50	DDR4_DQ50
DQ51	DDR4_DQ51
DQ52	DDR4_DQ52
DQ53	DDR4_DQ53
DQ54	DDR4_DQ54
DQ55	DDR4_DQ55
DQ56	DDR4_DQ56
DQ57	DDR4_DQ57
DQ58	DDR4_DQ58
DQ59	DDR4_DQ59
DQ60	DDR4_DQ60
DQ61	DDR4_DQ61
DQ62	DDR4_DQ62
DQ63	DDR4_DQ63
DQ64	DDR4_DQ64
DQ65	DDR4_DQ65
DQ66	DDR4_DQ66
DQ67	DDR4_DQ67
DQ68	DDR4_DQ68
DQ69	DDR4_DQ69
DQ70	DDR4_DQ70
DQ71	DDR4_DQ71
DQ72	DDR4_DQ72
DQ73	DDR4_DQ73
DQ74	DDR4_DQ74
DQ75	DDR4_DQ75
DQ76	DDR4_DQ76
DQ77	DDR4_DQ77
DQ78	DDR4_DQ78
DQ79	DDR4_DQ79
DQ80	DDR4_DQ80
DQ81	DDR4_DQ81
DQ82	DDR4_DQ82
DQ83	DDR4_DQ83
DQ84	DDR4_DQ84
DQ85	DDR4_DQ85
DQ86	DDR4_DQ86
DQ87	DDR4_DQ87
DQ88	DDR4_DQ88
DQ89	DDR4_DQ89
DQ90	DDR4_DQ90
DQ91	DDR4_DQ91
DQ92	DDR4_DQ92
DQ93	DDR4_DQ93
DQ94	DDR4_DQ94
DQ95	DDR4_DQ95
DQ96	DDR4_DQ96
DQ97	DDR4_DQ97
DQ98	DDR4_DQ98
DQ99	DDR4_DQ99
DQ100	DDR4_DQ100
DQ101	DDR4_DQ101
DQ102	DDR4_DQ102
DQ103	DDR4_DQ103
DQ104	DDR4_DQ104
DQ105	DDR4_DQ105
DQ106	DDR4_DQ106
DQ107	DDR4_DQ107
DQ108	DDR4_DQ108
DQ109	DDR4_DQ109
DQ110	DDR4_DQ110
DQ111	DDR4_DQ111
DQ112	DDR4_DQ112
DQ113	DDR4_DQ113
DQ114	DDR4_DQ114
DQ115	DDR4_DQ115
DQ116	DDR4_DQ116
DQ117	DDR4_DQ117
DQ118	DDR4_DQ118
DQ119	DDR4_DQ119
DQ120	DDR4_DQ120
DQ121	DDR4_DQ121
DQ122	DDR4_DQ122
DQ123	DDR4_DQ123
DQ124	DDR4_DQ124
DQ125	DDR4_DQ125
DQ126	DDR4_DQ126
DQ127	DDR4_DQ127
DQ128	DDR4_DQ128
DQ129	DDR4_DQ129
DQ130	DDR4_DQ130
DQ131	DDR4_DQ131
DQ132	DDR4_DQ132
DQ133	DDR4_DQ133
DQ134	DDR4_DQ134
DQ135	DDR4_DQ135
DQ136	DDR4_DQ136
DQ137	DDR4_DQ137
DQ138	DDR4_DQ138
DQ139	DDR4_DQ139
DQ140	DDR4_DQ140
DQ141	DDR4_DQ141
DQ142	DDR4_DQ142
DQ143	DDR4_DQ143
DQ144	DDR4_DQ144
DQ145	DDR4_DQ145
DQ146	DDR4_DQ146
DQ147	DDR4_DQ147
DQ148	DDR4_DQ148
DQ149	DDR4_DQ149
DQ150	DDR4_DQ150
DQ151	DDR4_DQ151
DQ152	DDR4_DQ152
DQ153	DDR4_DQ153
DQ154	DDR4_DQ154
DQ155	DDR4_DQ155
DQ156	DDR4_DQ156
DQ157	DDR4_DQ157
DQ158	DDR4_DQ158
DQ159	DDR4_DQ159
DQ160	DDR4_DQ160
DQ161	DDR4_DQ161
DQ162	DDR4_DQ162
DQ163	DDR4_DQ163
DQ164	DDR4_DQ164
DQ165	DDR4_DQ165
DQ166	DDR4_DQ166
DQ167	DDR4_DQ167
DQ168	DDR4_DQ168
DQ169	DDR4_DQ169
DQ170	DDR4_DQ170
DQ171	DDR4_DQ171
DQ172	DDR4_DQ172
DQ173	DDR4_DQ173
DQ174	DDR4_DQ174
DQ175	DDR4_DQ175
DQ176	DDR4_DQ176
DQ177	DDR4_DQ177
DQ178	DDR4_DQ178
DQ179	DDR4_DQ179
DQ180	DDR4_DQ180
DQ181	DDR4_DQ181
DQ182	DDR4_DQ182
DQ183	DDR4_DQ183
DQ184	DDR4_DQ184
DQ185	DDR4_DQ185
DQ186	DDR4_DQ186
DQ187	DDR4_DQ187
DQ188	DDR4_DQ188
DQ189	DDR4_DQ189
DQ190	DDR4_DQ190
DQ191	DDR4_DQ191
DQ192	DDR4_DQ192
DQ193	DDR4_DQ193
DQ194	DDR4_DQ194
DQ195	DDR4_DQ195
DQ196	DDR4_DQ196
DQ197	DDR4_DQ197
DQ198	DDR4_DQ198
DQ199	DDR4_DQ199
DQ200	DDR4_DQ200
DQ201	DDR4_DQ201
DQ202	DDR4_DQ202
DQ203	DDR4_DQ203
DQ204	DDR4_DQ204
DQ205	DDR4_DQ205
DQ206	DDR4_DQ206
DQ207	DDR4_DQ207
DQ208	DDR4_DQ208
DQ209	DDR4_DQ209
DQ210	DDR4_DQ210
DQ211	DDR4_DQ211
DQ212	DDR4_DQ212
DQ213	DDR4_DQ213
DQ214	DDR4_DQ214
DQ215	DDR4_DQ215
DQ216	DDR4_DQ216
DQ217	DDR4_DQ217
DQ218	DDR4_DQ218
DQ219	DDR4_DQ219
DQ220	DDR4_DQ220
DQ221	DDR4_DQ221
DQ222	DDR4_DQ222
DQ223	DDR4_DQ223
DQ224	DDR4_DQ224
DQ225	DDR4_DQ225
DQ226	DDR4_DQ226
DQ227	DDR4_DQ227
DQ228	DDR4_DQ228
DQ229	DDR4_DQ229
DQ230	DDR4_DQ230
DQ231	DDR4_DQ231
DQ232	DDR4_DQ232
DQ233	DDR4_DQ233
DQ234	DDR4_DQ234
DQ235	DDR4_DQ235
DQ236	DDR4_DQ236
DQ237	DDR4_DQ237
DQ238	DDR4_DQ238
DQ239	DDR4_DQ239
DQ240	DDR4_DQ240
DQ241	DDR4_DQ241
DQ242	DDR4_DQ242
DQ243	DDR4_DQ243
DQ244	DDR4_DQ244
DQ245	DDR4_DQ245
DQ246	DDR4_DQ246
DQ247	DDR4_DQ247
DQ248	DDR4_DQ248
DQ249	DDR4_DQ249
DQ250	DDR4_DQ250
DQ251	DDR4_DQ251
DQ252	DDR4_DQ252
DQ253	DDR4_DQ253
DQ254	DDR4_DQ254
DQ255	DDR4_DQ255
DQ256	DDR4_DQ256
DQ257	DDR4_DQ257
DQ258	DDR4_DQ258
DQ259	DDR4_DQ259
DQ260	DDR4_DQ260
DQ261	DDR4_DQ261
DQ262	DDR4_DQ262
DQ263	DDR4_DQ263
DQ264	DDR4_DQ264
DQ265	DDR4_DQ265
DQ266	DDR4_DQ266
DQ267	DDR4_DQ267
DQ268	DDR4_DQ268
DQ269	DDR4_DQ269
DQ270	DDR4_DQ270
DQ271	DDR4_DQ271
DQ272	DDR4_DQ272
DQ273	DDR4_DQ273
DQ274	DDR4_DQ274
DQ275	DDR4_DQ275
DQ276	DDR4_DQ276
DQ277	DDR4_DQ277
DQ278	DDR4_DQ278
DQ279	DDR4_DQ279
DQ280	DDR4_DQ280
DQ281	DDR4_DQ281
DQ282	DDR4_DQ282
DQ283	DDR4_DQ283
DQ284	DDR4_DQ284
DQ285	DDR4_DQ285
DQ286	DDR4_DQ286
DQ287	DDR4_DQ287
DQ288	DDR4_DQ288
DQ289	DDR4_DQ289
DQ290	DDR4_DQ290
DQ291	DDR4_DQ291
DQ292	DDR4_DQ292
DQ293	DDR4_DQ293
DQ294	DDR4_DQ294
DQ295	DDR4_DQ295
DQ296	DDR4_DQ296
DQ297	DDR4_DQ297
DQ298	DDR4_DQ298
DQ299	DDR4_DQ299
DQ300	DDR4_DQ300
DQ301	DDR4_DQ301
DQ302	DDR4_DQ302
DQ303	DDR4_DQ303
DQ304	DDR4_DQ304
DQ305	DDR4_DQ305
DQ306	DDR4_DQ306
DQ307	DDR4_DQ307
DQ308	DDR4_DQ308
DQ309	DDR4_DQ309
DQ310	DDR4_DQ310
DQ311	DDR4_DQ311
DQ312	DDR4_DQ312
DQ313	DDR4_DQ313
DQ314	DDR4_DQ314
DQ315	DDR4_DQ315
DQ316	DDR4_DQ316
DQ317	DDR4_DQ317
DQ318	DDR4_DQ318
DQ319	DDR4_DQ319
DQ320	DDR4_DQ320
DQ321	DDR4_DQ321
DQ322	DDR4_DQ322
DQ323	DDR4_DQ323
DQ324	DDR4_DQ324
DQ325	DDR4_DQ325
DQ326	DDR4_DQ326
DQ327	DDR4_DQ327
DQ328	DDR4_DQ328
DQ329	DDR4_DQ329
DQ330	DDR4_DQ330
DQ331	DDR4_DQ331
DQ332	DDR4_DQ332
DQ333	DDR4_DQ333
DQ334	DDR4_DQ334
DQ335	DDR4_DQ335
DQ336	DDR4_DQ336
DQ337	DDR4_DQ337
DQ338	DDR4_DQ338
DQ339	DDR4_DQ339
DQ340	DDR4_DQ340
DQ341	DDR4_DQ341
DQ342	DDR4_DQ342
DQ343	DDR4_DQ343
DQ344	DDR4_DQ344
DQ345	DDR4_DQ345
DQ346	DDR4_DQ346
DQ347	DDR4_DQ347
DQ348	DDR4_DQ348
DQ349	DDR4_DQ349
DQ350	DDR4_DQ350
DQ351	DDR4_DQ351
DQ352	DDR4_DQ352
DQ353	DDR4_DQ353
DQ354	DDR4_DQ354
DQ355	DDR4_DQ355
DQ356	DDR4_DQ356
DQ357	DDR4_DQ357
DQ358	DDR4_DQ358
DQ359	DDR4_DQ359
DQ360	DDR4_DQ360
DQ361	DDR4_DQ361
DQ362	DDR4_DQ362
DQ363	DDR4_DQ363
DQ364	DDR4_DQ364
DQ365	DDR4_DQ365
DQ366	DDR4_DQ366
DQ367	DDR4_DQ367
DQ368	DDR4_DQ368
DQ369	DDR4_DQ369
DQ370	DDR4_DQ370
DQ371	DDR4_DQ371
DQ372	DDR4_DQ372
DQ373	DDR4_DQ373
DQ374	DDR4_DQ374
DQ375	DDR4_DQ375
DQ376	DDR4_DQ376
DQ377	DDR4_DQ377
DQ378	DDR4_DQ378
DQ379	DDR4_DQ379
DQ380	DDR4_DQ380
DQ381	DDR4_DQ381
DQ382	DDR4_DQ382
DQ383	DDR4_DQ383
DQ384	DDR4_DQ384
DQ385	DDR4_DQ385
DQ386	DDR4_DQ386
DQ387	DDR4_DQ387
DQ388	DDR4_DQ388
DQ389	DDR4_DQ389
DQ390	DDR4_DQ390
DQ391	DDR4_DQ391
DQ392	DDR4_DQ392
DQ393	DDR4_DQ393
DQ394	DDR4_DQ394
DQ395	DDR4_DQ395
DQ396	DDR4_DQ396
DQ397	DDR4_DQ397
DQ398	DDR4_DQ398
DQ399	DDR4_DQ399
DQ400	DDR4_DQ400
DQ401	DDR4_DQ401
DQ402	DDR4_DQ402
DQ403	DDR4_DQ403
DQ404	DDR4_DQ404
DQ405	DDR4_DQ405
DQ406	DDR4_DQ406
DQ407	DDR4_DQ407
DQ408	DDR4_DQ408
DQ409	DDR4_DQ409
DQ410	DDR4_DQ410
DQ411	DDR4_DQ411
DQ412	DDR4_DQ412
DQ413	DDR4_DQ413
DQ414	DDR4_DQ414
DQ415	DDR4_DQ415
DQ416	DDR4_DQ416
DQ417	DDR4_DQ417
DQ418	DDR4_DQ418
DQ419	DDR4_DQ419
DQ420	DDR4_DQ420
DQ421	DDR4_DQ421
DQ422	DDR4_DQ422
DQ423	DDR4_DQ423
DQ424	DDR4_DQ424
DQ425	DDR4_DQ425
DQ426	DDR4_DQ426
DQ427	DDR4_DQ427
DQ428	DDR4_DQ428
DQ429	DDR4_DQ429
DQ430	DDR4_DQ430
DQ431	DDR4_DQ431
DQ432	DDR4_DQ432
DQ433	DDR4_DQ433
DQ434	DDR4_DQ434
DQ435	DDR4_DQ435
DQ436	DDR4_DQ436
DQ437	DDR4_DQ437
DQ438	DDR4_DQ438
DQ439	DDR4_DQ439
DQ440	DDR4_DQ440
DQ441	DDR4_DQ441
DQ442	DDR4_DQ442
DQ443	DDR4_DQ443
DQ444	DDR4_DQ444
DQ445	DDR4_DQ445
DQ446	DDR4_DQ446
DQ447	DDR4_DQ447
DQ448	DDR4_DQ448
DQ449	DDR4_DQ449
DQ450	DDR4_DQ450
DQ451	DDR4_DQ451
DQ452	DDR4_DQ452
DQ453	DDR4_DQ453
DQ454	DDR4_DQ454
DQ455	DDR4_DQ455
DQ456	DDR4_DQ456
DQ457	DDR4_DQ457
DQ458	DDR4_DQ458
DQ459	DDR4_DQ459
DQ460	DDR4_DQ460
DQ461	DDR4_DQ461
DQ462	DDR4_DQ462
DQ463	DDR4_DQ463
DQ464	DDR4_DQ464
DQ465	DDR4_DQ465
DQ466	DDR4_DQ466
DQ467	DDR4_DQ467
DQ468	DDR4_DQ468
DQ469	DDR4_DQ469
DQ470	DDR4_DQ470
DQ471	DDR4_DQ471
DQ472	DDR4_DQ472
DQ473	DDR4_DQ473
DQ474	DDR4_DQ474
DQ475	DDR4_DQ475
DQ476	DDR4_DQ476
DQ477	DDR4_DQ477
DQ478	DDR4_DQ478
DQ479	DDR4_DQ479
DQ480	DDR4_DQ480
DQ481	DDR4_DQ481
DQ482	DDR4_DQ482
DQ483	DDR4_DQ483
DQ484	DDR4_DQ484
DQ485	DDR4_DQ485
DQ486	DDR4_DQ486
DQ487	DDR4_DQ487
DQ488	DDR4_DQ488
DQ489	DDR4_DQ489
DQ490	DDR4_DQ490
DQ491	DDR4_DQ491
DQ492	DDR4_DQ492
DQ493	DDR4_DQ493
DQ494	DDR4_DQ494
DQ495	DDR4_DQ495
DQ496	DDR4_DQ496
DQ497	DDR4_DQ497
DQ498	DDR4_DQ498
DQ499	DDR4_DQ499
DQ500	DDR4_DQ500
DQ501	DDR4_DQ501
DQ502	DDR4_DQ502
DQ503</	

for USB HUB update to OHY50, manual modify PN to GL850G-OHY50

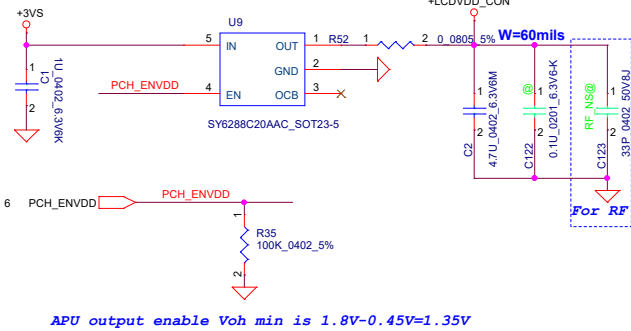


PORT1	Camera
PORT2	Touch Screen
PORT3	Finger print

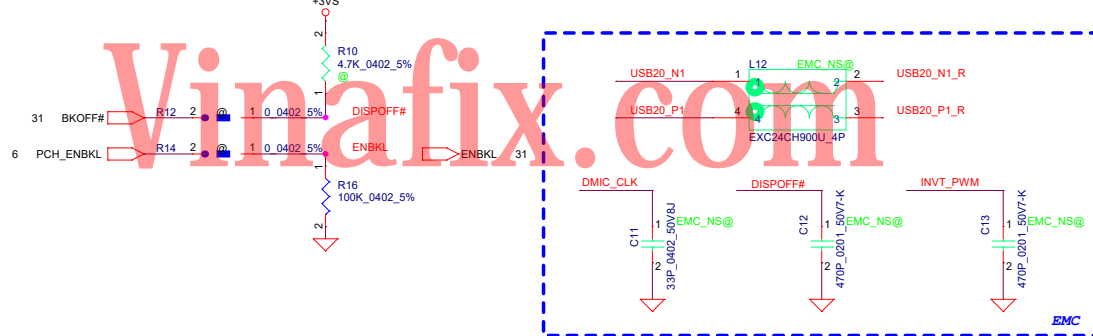


Security Classification	LC Future Center Secret Data		Title	USB Hub	
Issued Date	2016/08/16	Deciphered Date	2017/08/15	Size	Document Number
THIS SHEET OF ENGINEERING DRAWING IS THE PROPRIETARY PROPERTY OF LC FUTURE CENTER. AND CONTAINS CONFIDENTIAL AND TRADE SECRET INFORMATION. THIS SHEET MAY NOT BE TRANSFERRED FROM THE CUSTODY OF THE COMPETENT DIVISION OF R&D DEPARTMENT EXCEPT AS AUTHORIZED BY LC FUTURE CENTER NEITHER THIS SHEET NOR THE INFORMATION IT CONTAINS MAY BE USED BY OR DISCLOSED TO ANY THIRD PARTY WITHOUT PRIOR WRITTEN CONSENT OF LC FUTURE CENTER.				GV451	Rev 1.0
				Date: Thursday, December 05, 2019	Sheet 16 of 44

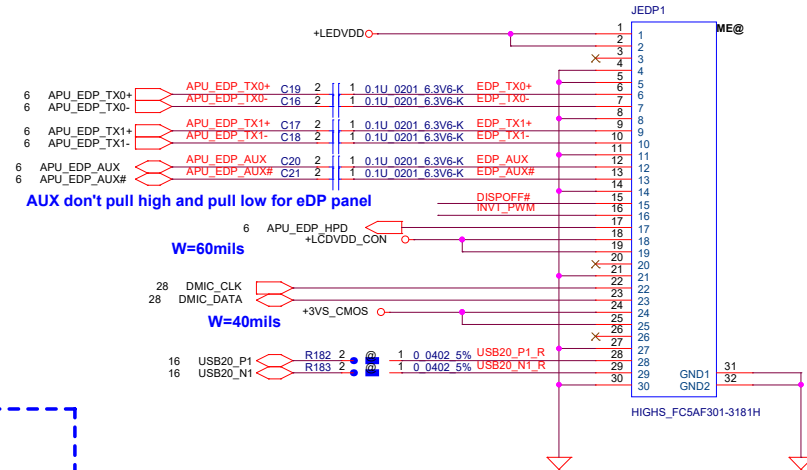
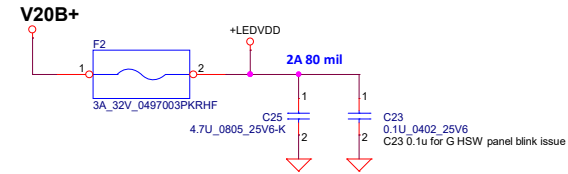
LCD POWER CIRCUIT



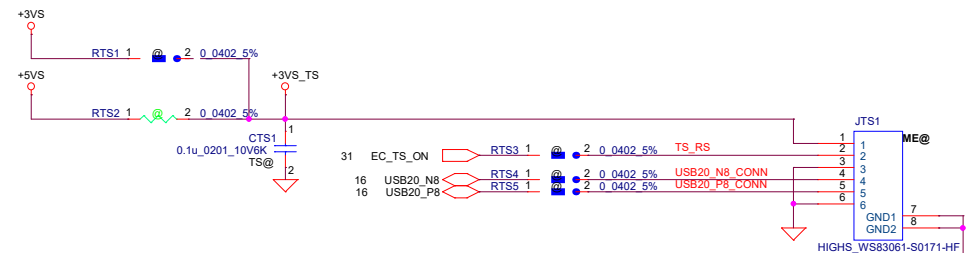
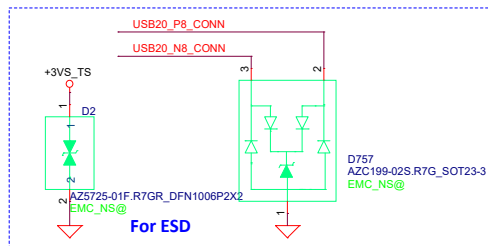
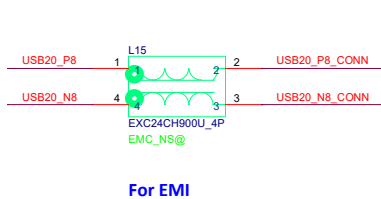
CMOS Camera



B+ to +LEDVDD POWER



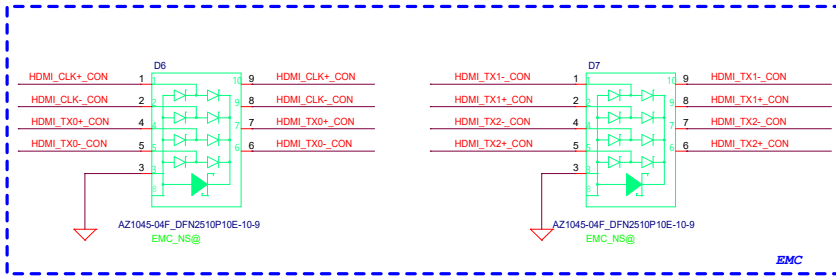
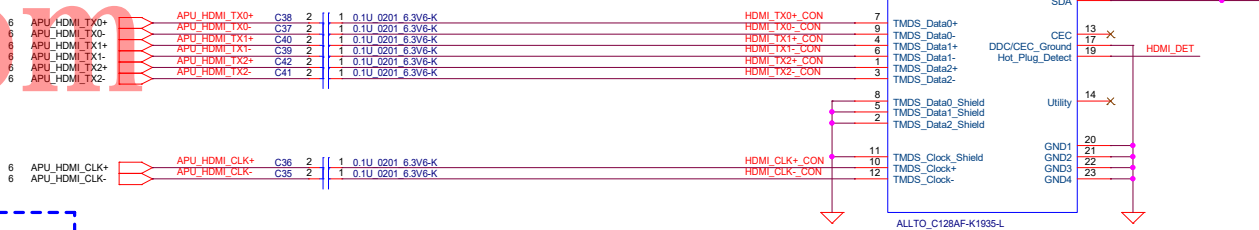
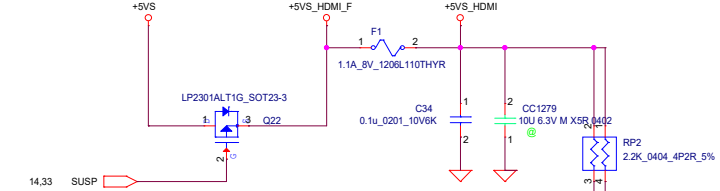
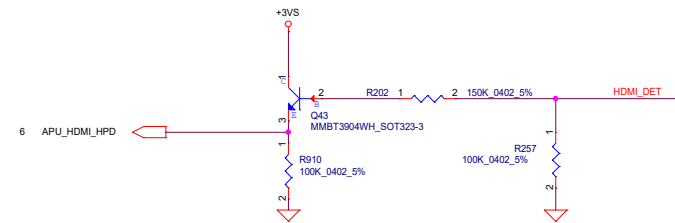
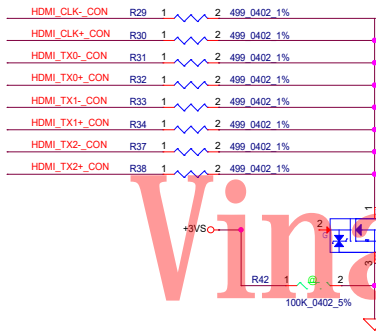
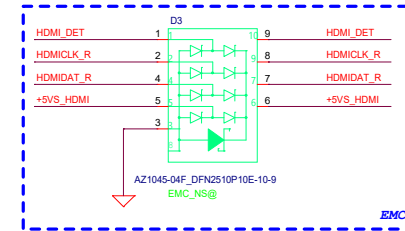
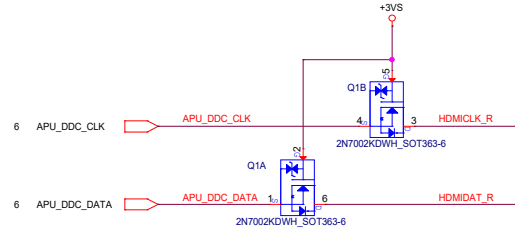
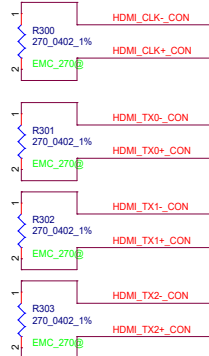
Touch Screen



Security Classification			
LC Future Center Secret Data			
Issued Date	2013/08/08	Deciphered Date	2013/08/05
THIS SHEET OF ENGINEERING DRAWING IS THE PROPRIETARY PROPERTY OF LC FUTURE CENTER, AND CONTAINS CONFIDENTIAL AND TRADE SECRET INFORMATION. THIS SHEET MAY NOT BE TRANSFERRED FROM THE CUSTODY OF THE COMPETENT DIVISION OF THE DEPARTMENT EXCEPT AS AUTHORIZED BY LC FUTURE CENTER. NEITHER THIS SHEET NOR THE INFORMATION IT CONTAINS MAY BE USED BY OR DISCLOSED TO ANY THIRD PARTY WITHOUT PRIOR WRITTEN CONSENT OF LC FUTURE CENTER.			
Title		eDP/CMOS	
Size	Document Number	GV451	
Custom		Rev 1.0	
Date:	Thursday, December 05, 2019	Sheet	17 of 44

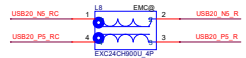
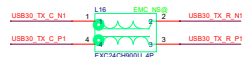
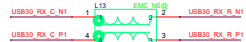
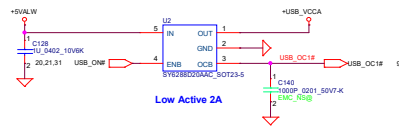
Vinafix.com

7/29 S145API EMC request for HDMI

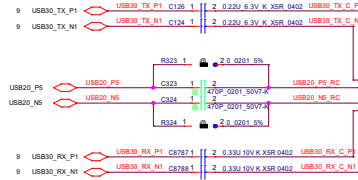


Security Classification		LC Future Center Secret Data		Title	
Issued Date		2013/08/15		Deciphered Date	
2013/08/15		2013/08/15		HDMI_CONN	
THIS SHEET OF ENGINEERING DRAWING IS THE PROPRIETARY PROPERTY OF LC FUTURE CENTER, AND CONTAINS CONFIDENTIAL AND TRADE SECRET INFORMATION. THIS SHEET MAY NOT BE TRANSFERRED FROM THE CUSTODY OF THE COMPETENT DIVISION OF R&D DEPARTMENT EXCEPT AS AUTHORIZED BY LC FUTURE CENTER. NEITHER THIS SHEET NOR THE INFORMATION IT CONTAINS MAY BE USED BY OR DISCLOSED TO ANY THIRD PARTY WITHOUT PRIOR WRITTEN CONSENT OF LC FUTURE CENTER.		Size		Document Number	
		Custom		GV451	
Date:		Thursday, December 05, 2019		Sheet	
		19		of	
		44		Rev	
				1.0	

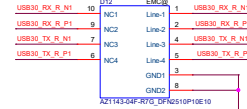
LEFT SIDE USB3.0 PORT x2



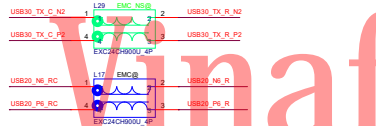
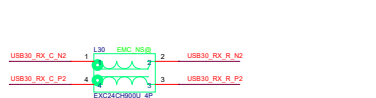
EMC



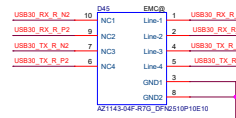
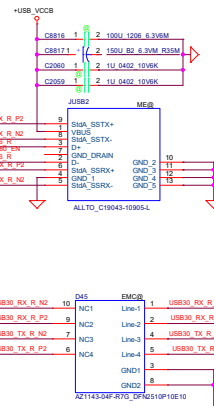
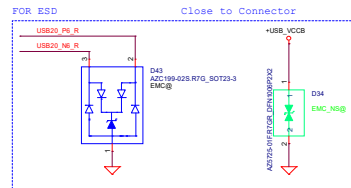
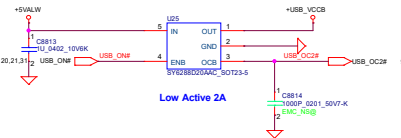
EMC



USB3.0 PORT



For USB Debug Function

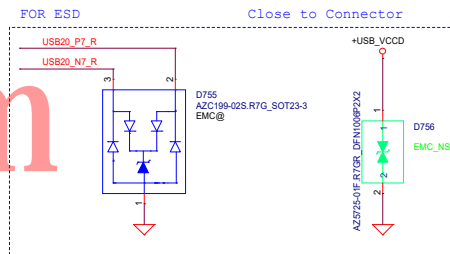
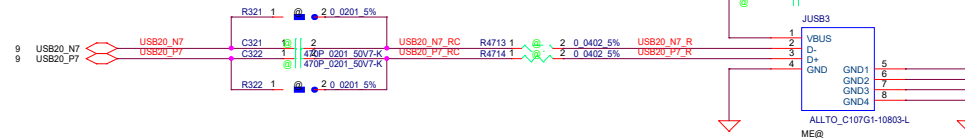
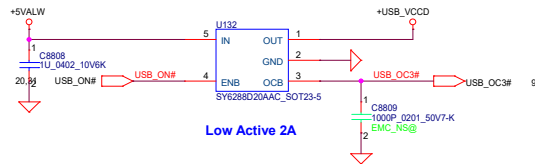


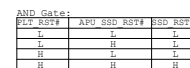
USBDEBUG	Kernel debug
Set Input	Set Input
Set Output Low	ENABLER

UART_P80_EN	POST 80
Set Input	DISABLE
Set Output Low	ENABLER


DE#	S	FUNCTION
0	0	DISABLE
1	0	0x1/1-10x1/1-1
1	0	0x1/1-10x1/1-1

Security Classification	LC Future Center Secret Data	Title
Issued Date	2016/08/16	Deciphered Date
2017/08/15		
<p>THIS SHEET OF ENGINEERING DRAWING IS THE PROPRIETARY PROPERTY OF LC FUTURE CENTER AND CONTAINS CONFIDENTIAL AND TRADE SECRET INFORMATION. THIS SHEET MAY NOT BE REPRODUCED OR TRANSMITTED IN ANY FORM OR BY ANY MEANS, ELECTRONIC OR MECHANICAL, INCLUDING PHOTOCOPYING, RECORDING, OR BY ANY INFORMATION STORAGE AND RETRIEVAL SYSTEM, WITHOUT THE WRITTEN PERMISSION OF LC FUTURE CENTER. ANY UNAUTHORIZED REPRODUCTION OR TRANSMISSION OF THIS SHEET MAY BE SUBJECT TO LEGAL ACTION.</p>		
Size	Document Number	Rev
60x	GV451	1.0
Page	Thursday, December 26, 2019	20 of 44






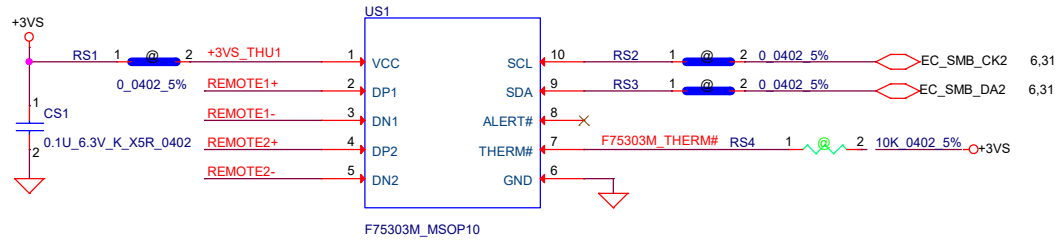
Vinafix.com

Security Classification		LC Future Center Secret Data		Title		
Issued Date	2013/08/15	Deciphered Date	2013/08/15	Blank		
THIS SHEET OF ENGINEERING DRAWING IS THE PROPRIETARY PROPERTY OF LC FUTURE CENTER, AND CONTAINS CONFIDENTIAL AND TRADE SECRET INFORMATION. THIS SHEET MAY NOT BE TRANSFERRED FROM THE CUSTODY OF THE COMPETENT DIVISION OF R&D DEPARTMENT AUTHORIZED BY LC FUTURE CENTER NEITHER THIS SHEET NOR THE INFORMATION IT CONTAINS MAY BE USED BY OR DISCLOSED TO ANY THIRD PARTY WITHOUT PRIOR WRITTEN CONSENT OF LC FUTURE CENTER.				Size	Document Number	
				B	GV451	1.0
				Date:	Thursday, December 05, 2019	Sheet 23 of 44

Vinafix.com

Security Classification		LC Future Center Secret Data		Title						
Issued Date		2013/08/08		Deciphered Date			2013/08/05		Blank	
THIS SHEET OF ENGINEERING DRAWING IS THE PROPRIETARY PROPERTY OF LC FUTURE CENTER. AND CONTAINS CONFIDENTIAL AND TRADE SECRET INFORMATION. THIS SHEET MAY NOT BE TRANSFERRED FROM THE CUSTODY OF THE COMPETENT DIVISION OF R&D DEPARTMENT EXCEPT AS AUTHORIZED BY LC FUTURE CENTER NEITHER THIS SHEET NOR THE INFORMATION IT CONTAINS MAY BE USED BY OR DISCLOSED TO ANY THIRD PARTY WITHOUT PRIOR WRITTEN CONSENT OF LC FUTURE CENTER.				Size			Document Number		Rev	
				Custom		GV451		1.0		
				Date:		Thursday, December 05, 2019		Sheet 24 of 44		

Thermal Sensor placed nearby SO-DIMM

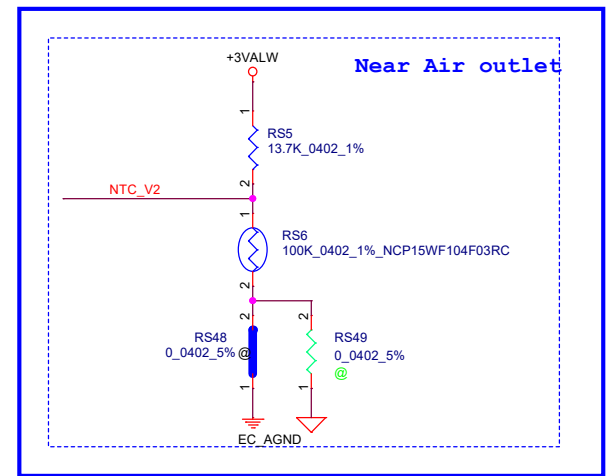


Address 1001_101xb

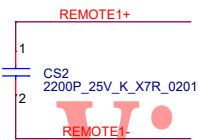
Internal pull up 1.2K to 1.5V

R for initial thermal shutdown temp

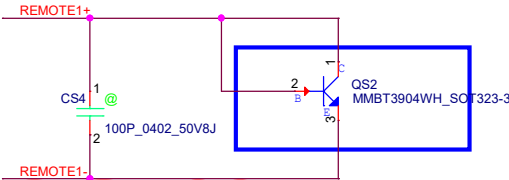
REMOTE2+/-:
Trace width/space:10/10 mil
Trace length:<8"



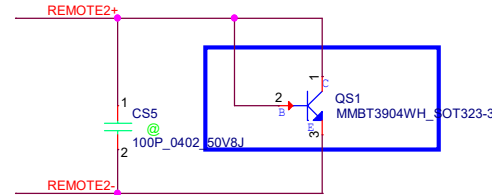
Close to US1



Close to Charger

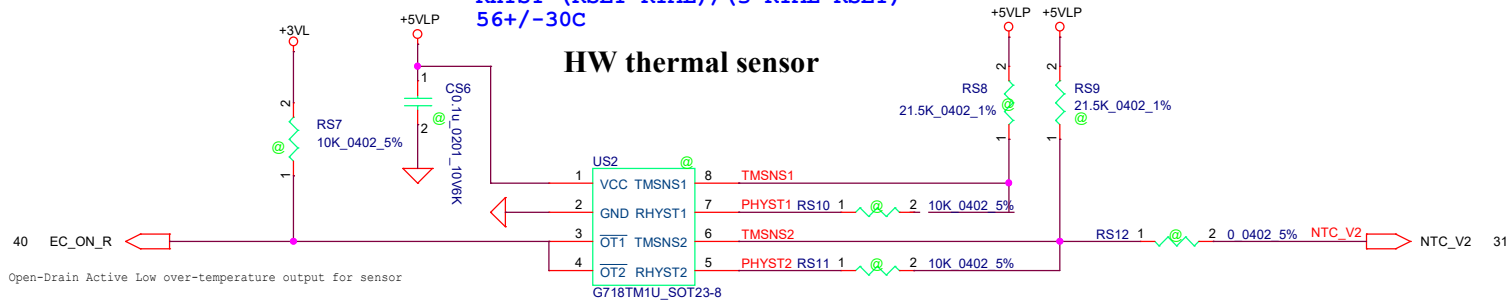


Close APU




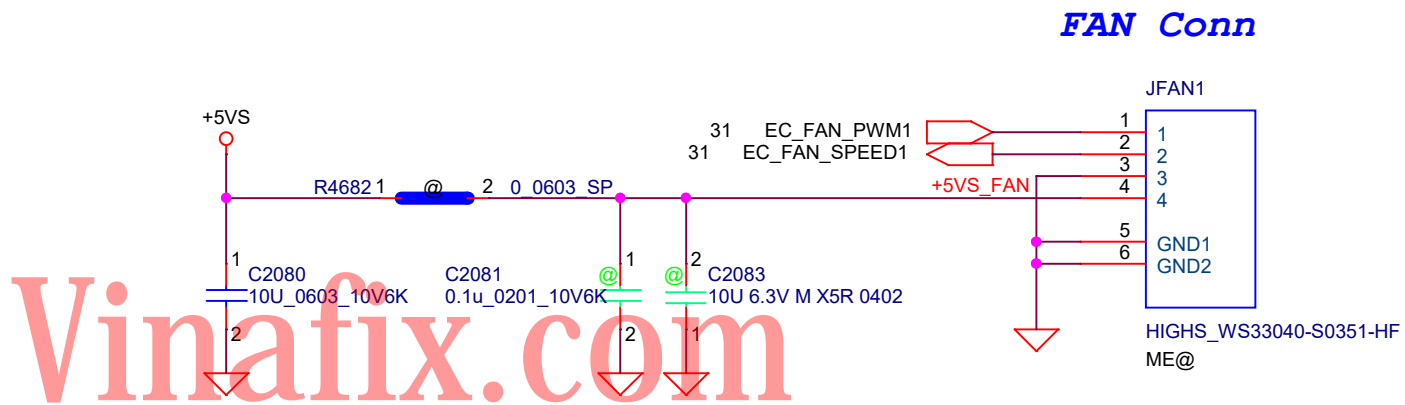
over temperature threshold:
 $RSET=3 \times RTMH$
92+/-30C
Hysteresis temperature threshold.
 $RHYST=(RSET \times RTML) / (3 \times RTML - RSET)$
56+/-30C


HW thermal sensor



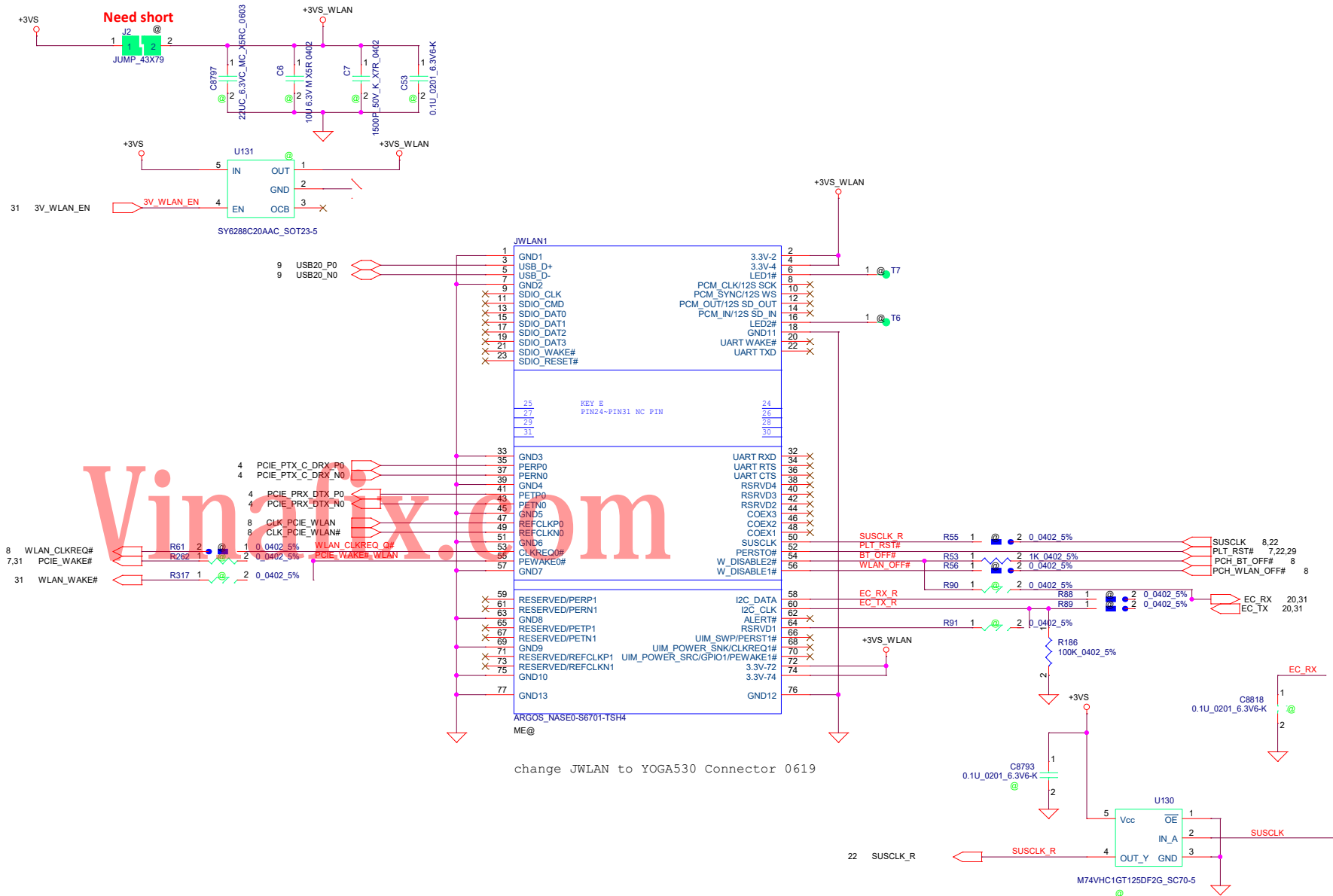
Open-Drain Active Low over-temperature output for sensor


Security Classification		LC Future Center Secret Data		Title		
Issued Date		Deciphered Date		THERMAL SENSOR		
THIS SHEET OF ENGINEERING DRAWING IS THE PROPRIETARY PROPERTY OF LC FUTURE CENTER. AND CONTAINS CONFIDENTIAL AND TRADE SECRET INFORMATION. THIS SHEET MAY NOT BE TRANSFERRED FROM THE CUSTODY OF THE COMPETENT DIVISION OF R&D DEPARTMENT EXCEPT AS AUTHORIZED BY LC FUTURE CENTER NEITHER THIS SHEET NOR THE INFORMATION IT CONTAINS MAY BE USED BY OR DISCLOSED TO ANY THIRD PARTY WITHOUT PRIOR WRITTEN CONSENT OF LC FUTURE CENTER.						
Size		Document Number		GV451		Rev
3						1.0
Date:		Thursday, December 05, 2019		Sheet		25 of 44



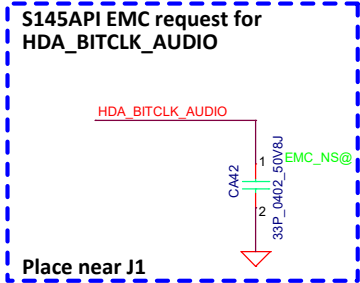
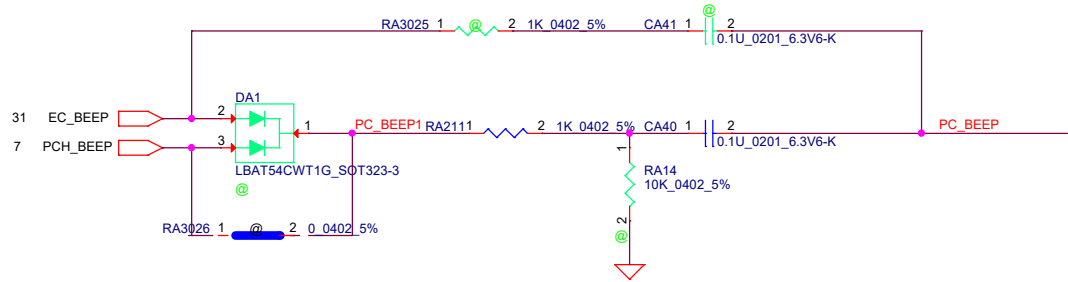
Security Classification		LC Future Center Secret Data				Title FAN CONN							
Issued Date		2013/08/08		Deciphered Date						2013/08/05			
THIS SHEET OF ENGINEERING DRAWING IS THE PROPRIETARY PROPERTY OF LC FUTURE CENTER. AND CONTAINS CONFIDENTIAL AND TRADE SECRET INFORMATION. THIS SHEET MAY NOT BE TRANSFERRED FROM THE CUSTODY OF THE COMPETENT DIVISION OF R&D DEPARTMENT EXCEPT AS AUTHORIZED BY LC FUTURE CENTER NEITHER THIS SHEET NOR THE INFORMATION IT CONTAINS MAY BE USED BY OR DISCLOSED TO ANY THIRD PARTY WITHOUT PRIOR WRITTEN CONSENT OF LC FUTURE CENTER.						Size A		Document Number GV451		Rev 1.0			
						Date:		Thursday, December 05, 2019		Sheet		26 of 44	
						5		4		3		2	

Mini-Express Card(WLAN/WiMAX)

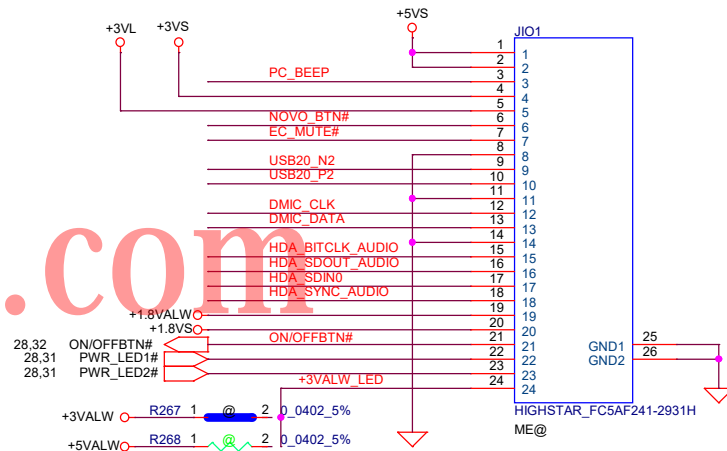


Security Classification		LC Future Center Secret Data		Title		
Issued Date	2013/08/08	Deciphered Date	2013/08/05	NGFF WLAN		
THIS SHEET OF ENGINEERING DRAWING IS THE PROPRIETARY PROPERTY OF LC FUTURE CENTER, AND CONTAINS CONFIDENTIAL AND TRADE SECRET INFORMATION. THIS SHEET MAY NOT BE TRANSFERRED FROM THE CUSTODY OF THE COMPETENT DIVISION OF R&D DEPARTMENT EXCEPT AS AUTHORIZED BY LC FUTURE CENTER. NEITHER THIS SHEET NOR THE INFORMATION IT CONTAINS MAY BE USED BY OR DISCLOSED TO ANY THIRD PARTY WITHOUT PRIOR WRITTEN CONSENT OF LC FUTURE CENTER.						
Size	Document Number	Rev				
Custom	GV451	1.0				
Date:	Thursday, December 05, 2019	Sheet	27	of	44	

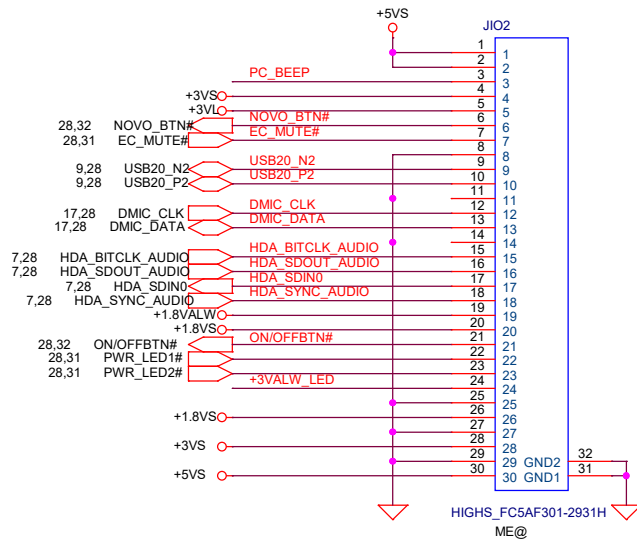
IO Connector



Vinafix.com




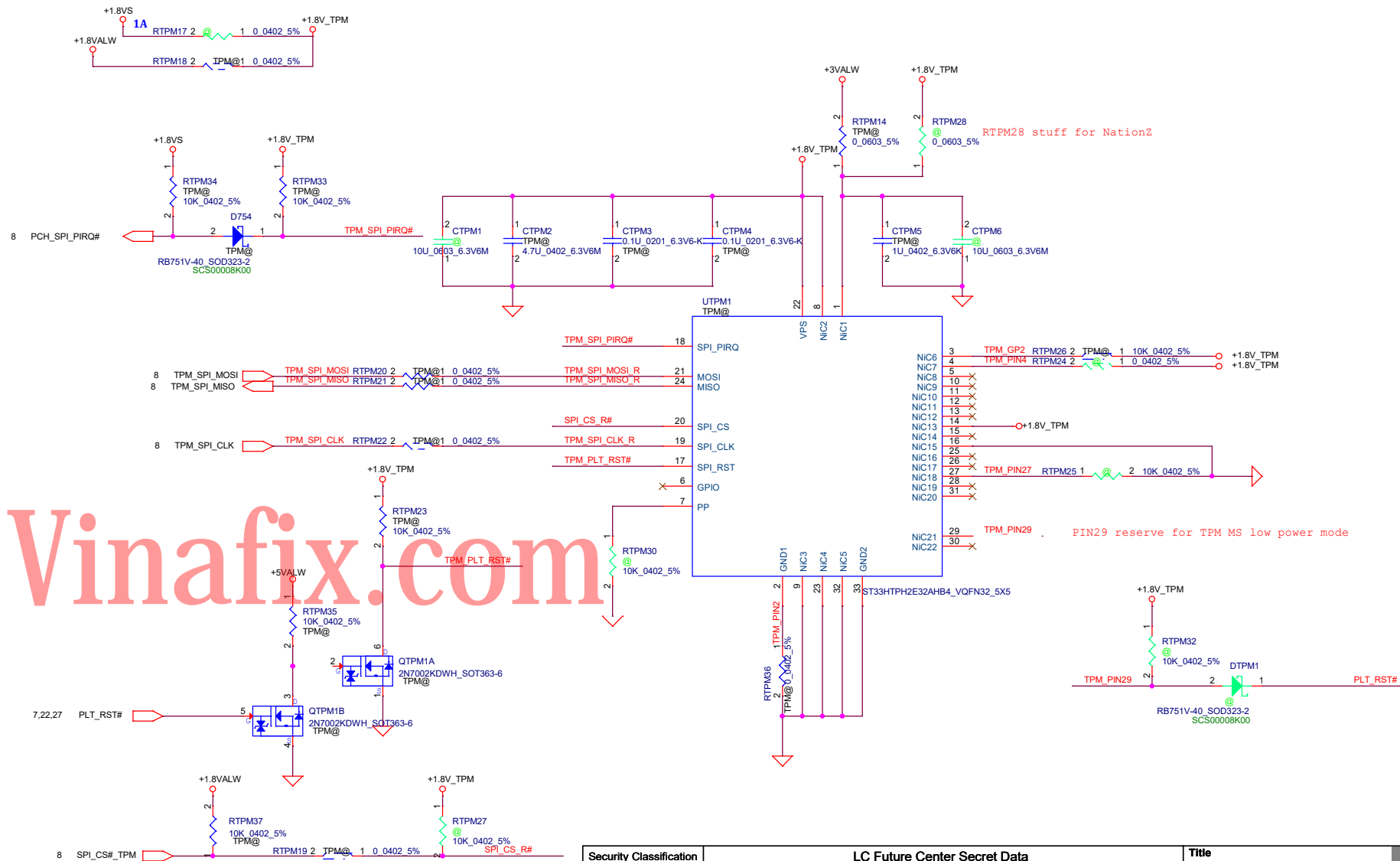
24Pin CONN




30Pin CONN

change SP01001IF00 to SP01001YP00 (30pin)0619

Security Classification		LC Future Center Secret Data				Title									
Issued Date		2016/08/16		Deciphered Date		2017/08/15				IO CONN					
THIS SHEET OF ENGINEERING DRAWING IS THE PROPRIETARY PROPERTY OF LC FUTURE CENTER. AND CONTAINS CONFIDENTIAL AND TRADE SECRET INFORMATION. THIS SHEET MAY NOT BE TRANSFERRED FROM THE CUSTODY OF THE COMPETENT DIVISION OF R&D DEPARTMENT EXCEPT AS AUTHORIZED BY LC FUTURE CENTER NEITHER THIS SHEET NOR THE INFORMATION IT CONTAINS MAY BE USED BY OR DISCLOSED TO ANY THIRD PARTY WITHOUT PRIOR WRITTEN CONSENT OF LC FUTURE CENTER.										Size		Document Number		Rev	
										B		GV451		1.0	
										Date:		Thursday, December 05, 2019		Sheet	

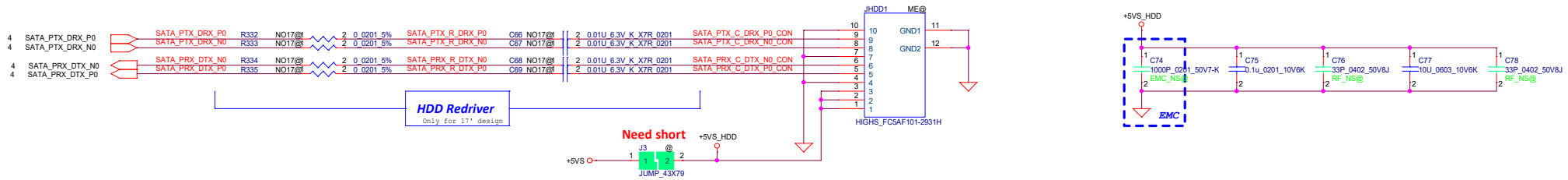


Security Classification		LC Future Center Secret Data		Title	
Issued Date	2016/08/16	Deciphered Date	2017/08/15	TPM	
THIS SHEET OF ENGINEERING DRAWING IS THE PROPRIETARY PROPERTY OF LC FUTURE CENTER, AND CONTAINS CONFIDENTIAL AND TRADE SECRET INFORMATION. THIS SHEET MAY NOT BE TRANSFERRED FROM THE CUSTODY OF THE COMPETENT DIVISION OF R&D DEPARTMENT EXCEPT AS AUTHORIZED BY LC FUTURE CENTER. NEITHER THIS SHEET NOR THE INFORMATION IT CONTAINS MAY BE USED BY OR DISCLOSED TO ANY THIRD PARTY WITHOUT PRIOR WRITTEN CONSENT OF LC FUTURE CENTER.					
				Size: Custom	Document Number: GV451
				Plotted: Thursday, December 05, 2019	Sheet: 29 of 44
				Rev: 1.0	

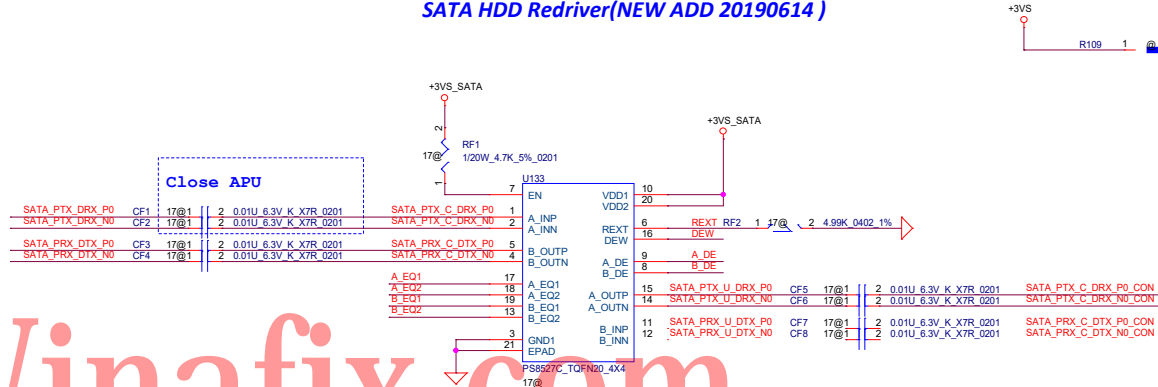


Rev: 1.0

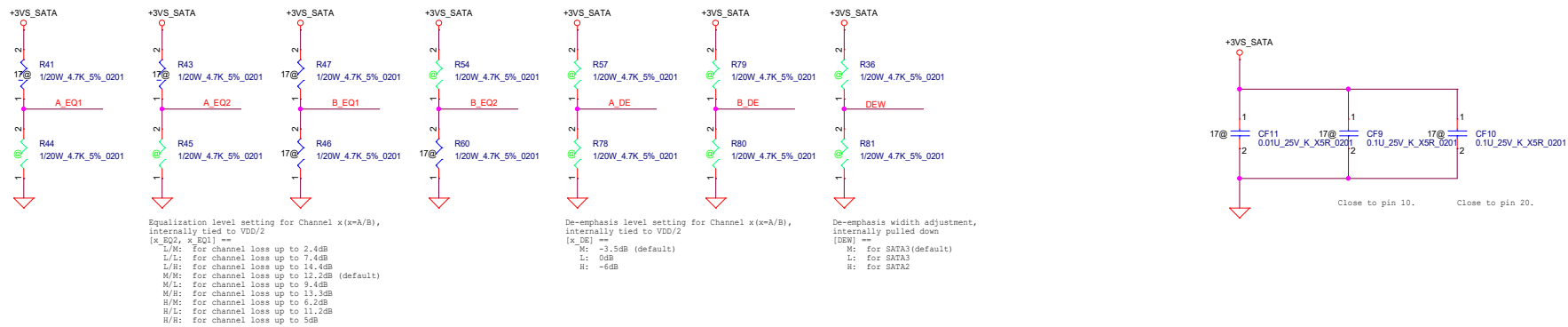
SATA HDD Conn.




SATA HDD Redriver(NEW ADD 20190614)

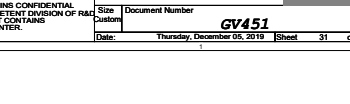
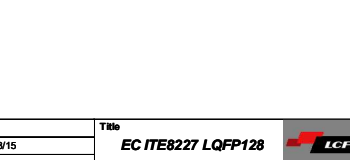
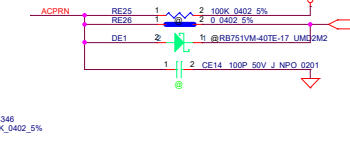
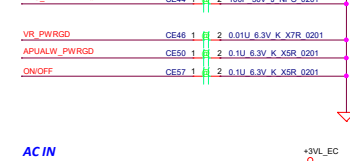
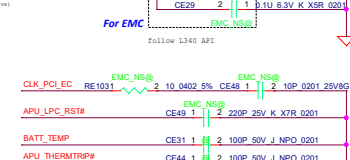
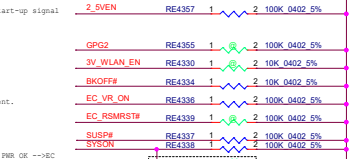
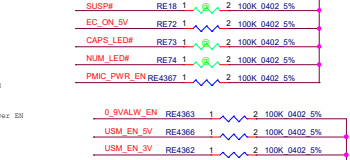
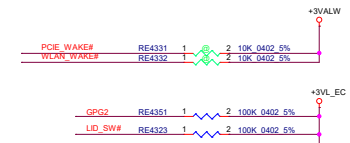
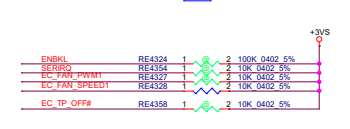
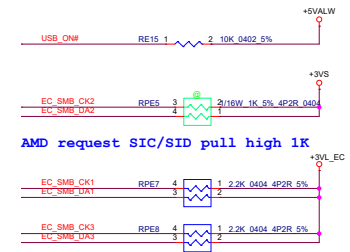


Vinafix.com

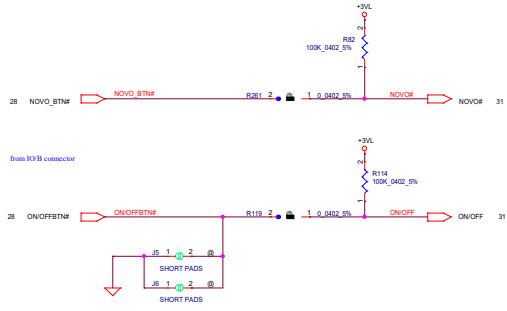


Follow Vendor suggest

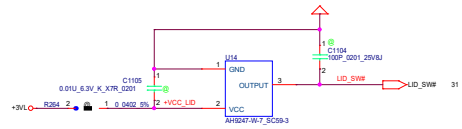
Security Classification	LC Future Center Secret Data		Title	
Issued Date	2013/08/08	Deciphered Date	2013/08/05	
THIS SHEET OF ENGINEERING DRAWING IS THE PROPRIETARY PROPERTY OF LC FUTURE CENTER, AND CONTAINS CONFIDENTIAL AND TRADE SECRET INFORMATION. THIS SHEET MAY NOT BE TRANSFERRED FROM THE CUSTODY OF THE COMPETENT DIVISION OF R&D DEPARTMENT EXCEPT AS AUTHORIZED BY LC FUTURE CENTER. NEITHER THIS SHEET NOR THE INFORMATION IT CONTAINS MAY BE USED BY OR DISCLOSED TO ANY THIRD PARTY WITHOUT PRIOR WRITTEN CONSENT OF LC FUTURE CENTER.				Size Custom
				Document Number GV451
				Date: Thursday, December 05, 2019 Sheet 30 of 44 Rev 1.0



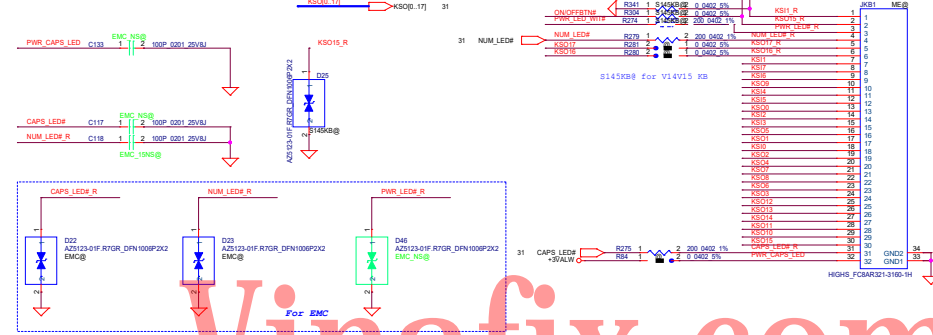
ON/OFF switch



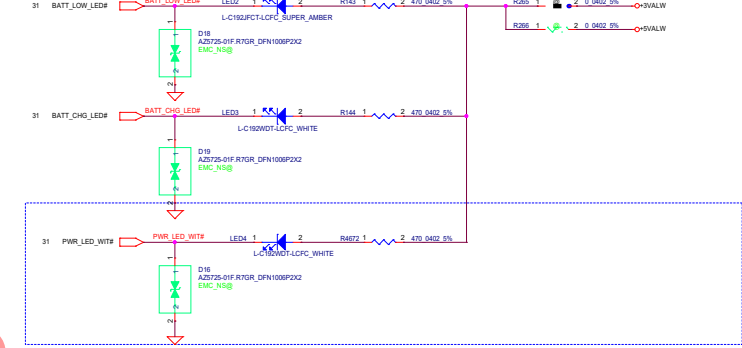
LID switch



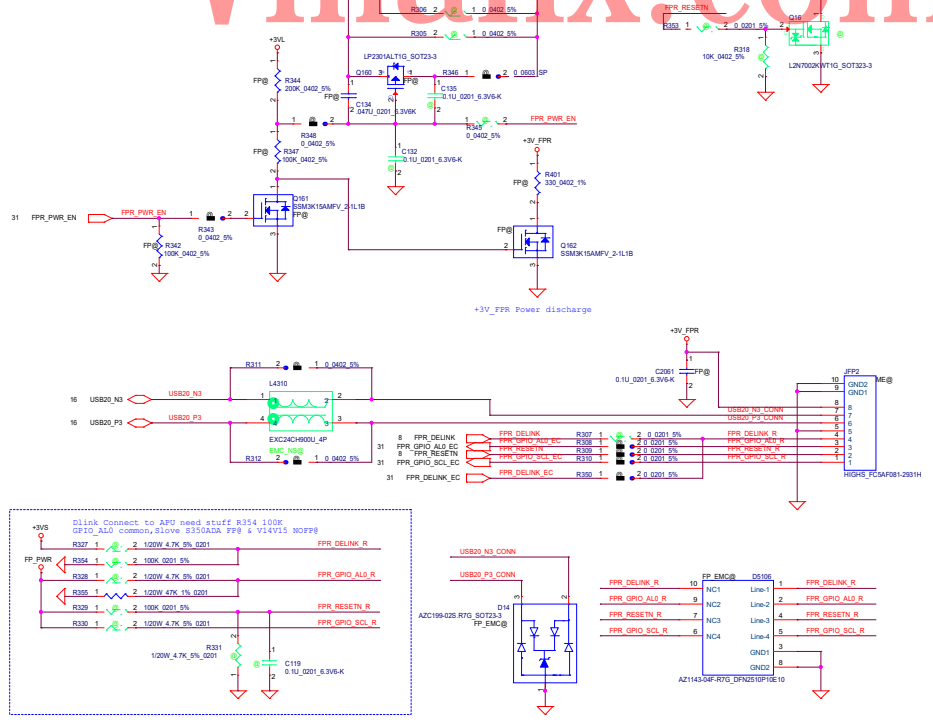
K/B Connector



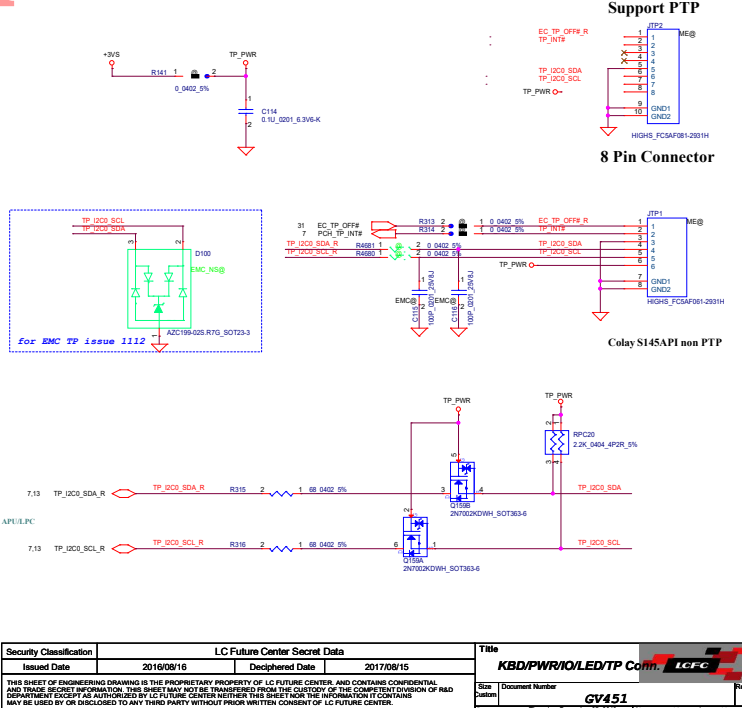
POWER LED



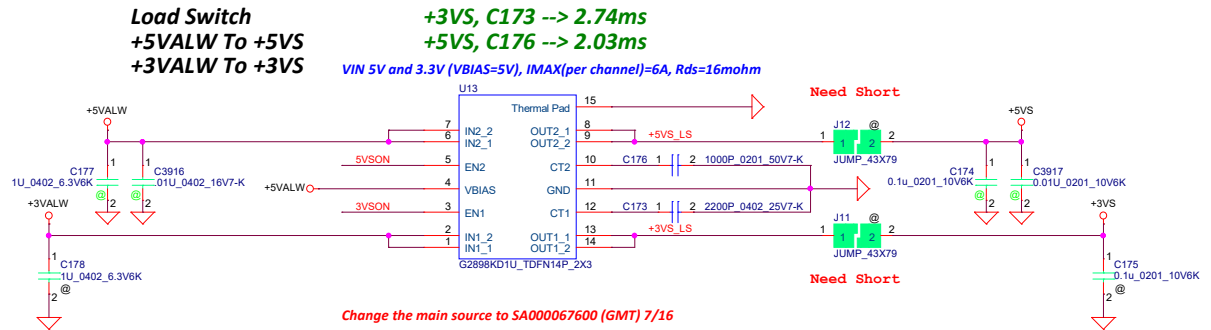
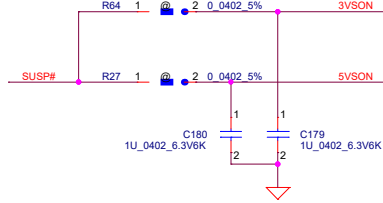
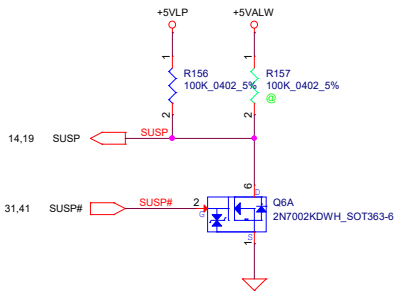
Finger Print Connector



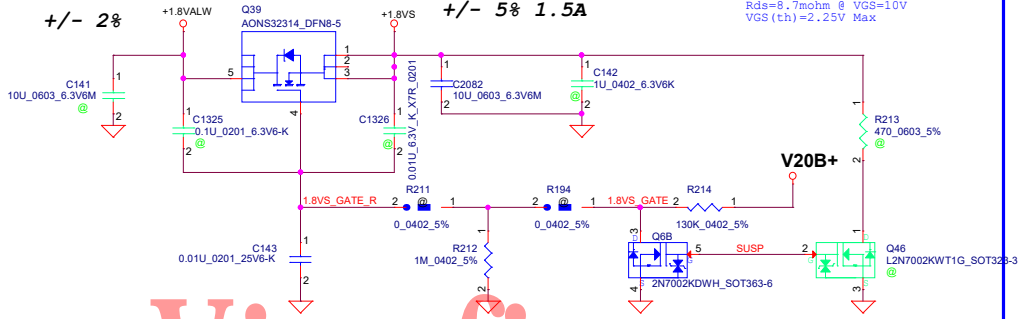
TP/B Connector



Security Classification		LC Future Center Secret Data		Title	
Issued Date	2016/08/16	Deciphered Date	2017/08/15	KBD/PWR/IO/LED/TP Conn. LCFC	
THIS SHEET OF ENGINEERING DRAWING IS THE PROPRIETARY PROPERTY OF LC FUTURE CENTER, AND CONTAINS CONFIDENTIAL AND TRADE SECRET INFORMATION. THIS SHEET MAY NOT BE TRANSFERRED FROM THE CUSTODY OF THE COMPETENT DIVISION OF R&D DEPARTMENT EXCEPT AS AUTHORIZED BY LC FUTURE CENTER. NEITHER THIS SHEET NOR THE INFORMATION IT CONTAINS MAY BE USED BY OR DISCLOSED TO ANY THIRD PARTY WITHOUT PRIOR WRITTEN CONSENT OF LC FUTURE CENTER.					
Size	Custom	Document Number	GV451		

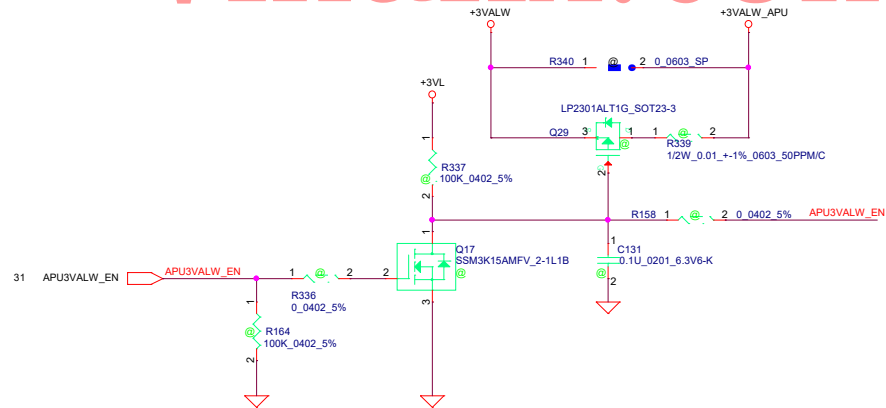


+1.8VALW to +1.8VS



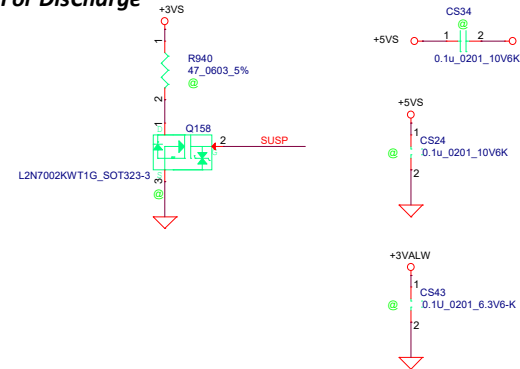
20VSB will change to 6V in DC mode, careful the Res divide voltage

+3VALW to +3VALW_APU



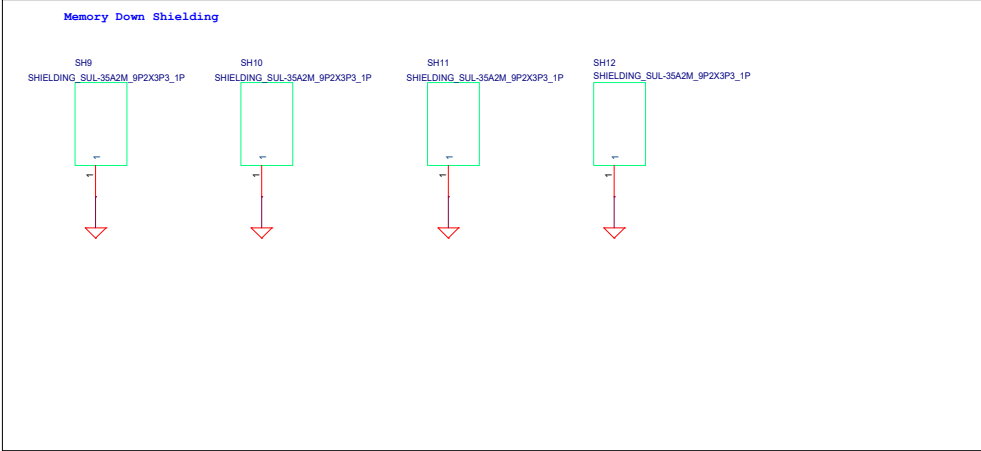
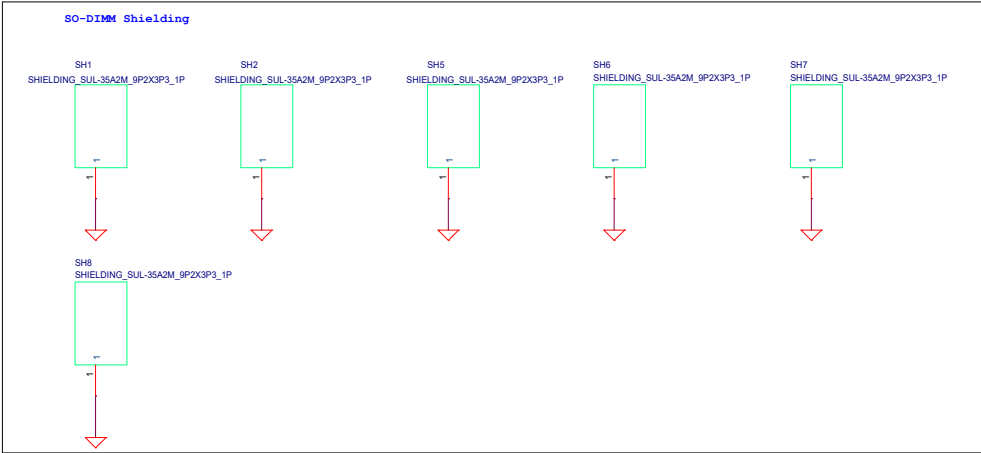
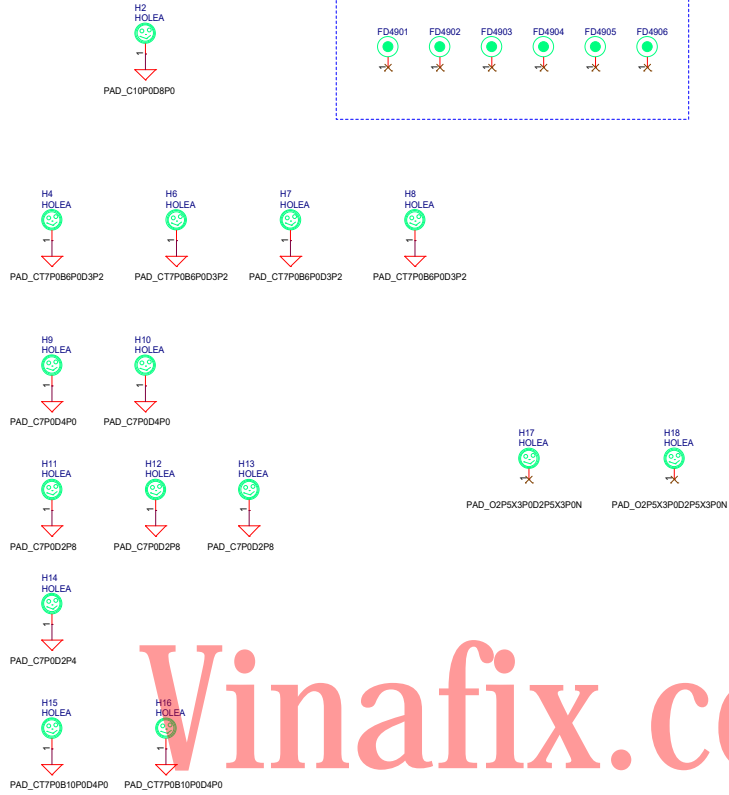
Disable +3VALW_APU when Mirror code

For DisCharge




Security Classification	LC Future Center Secret Data		Title	
Issued Date	2013/08/15	Deciphered Date	2013/08/15	DC V TO VS INTERFACE
THIS SHEET OF ENGINEERING DRAWING IS THE PROPRIETARY PROPERTY OF LC FUTURE CENTER, AND CONTAINS CONFIDENTIAL AND TRADE SECRET INFORMATION. THIS SHEET MAY NOT BE TRANSFERRED FROM THE CUSTODY OF THE COMPETENT DIVISION OF R&D DEPARTMENT EXCEPT AS AUTHORIZED BY LC FUTURE CENTER NEITHER THIS SHEET NOR THE INFORMATION IT CONTAINS MAY BE USED BY OR DISCLOSED TO ANY THIRD PARTY WITHOUT PRIOR WRITTEN CONSENT OF LC FUTURE CENTER.				Rev 1.0
Size	Document Number	GV451		
Date:	Thursday, December 05, 2019	Sheet	33	of 44

Hole




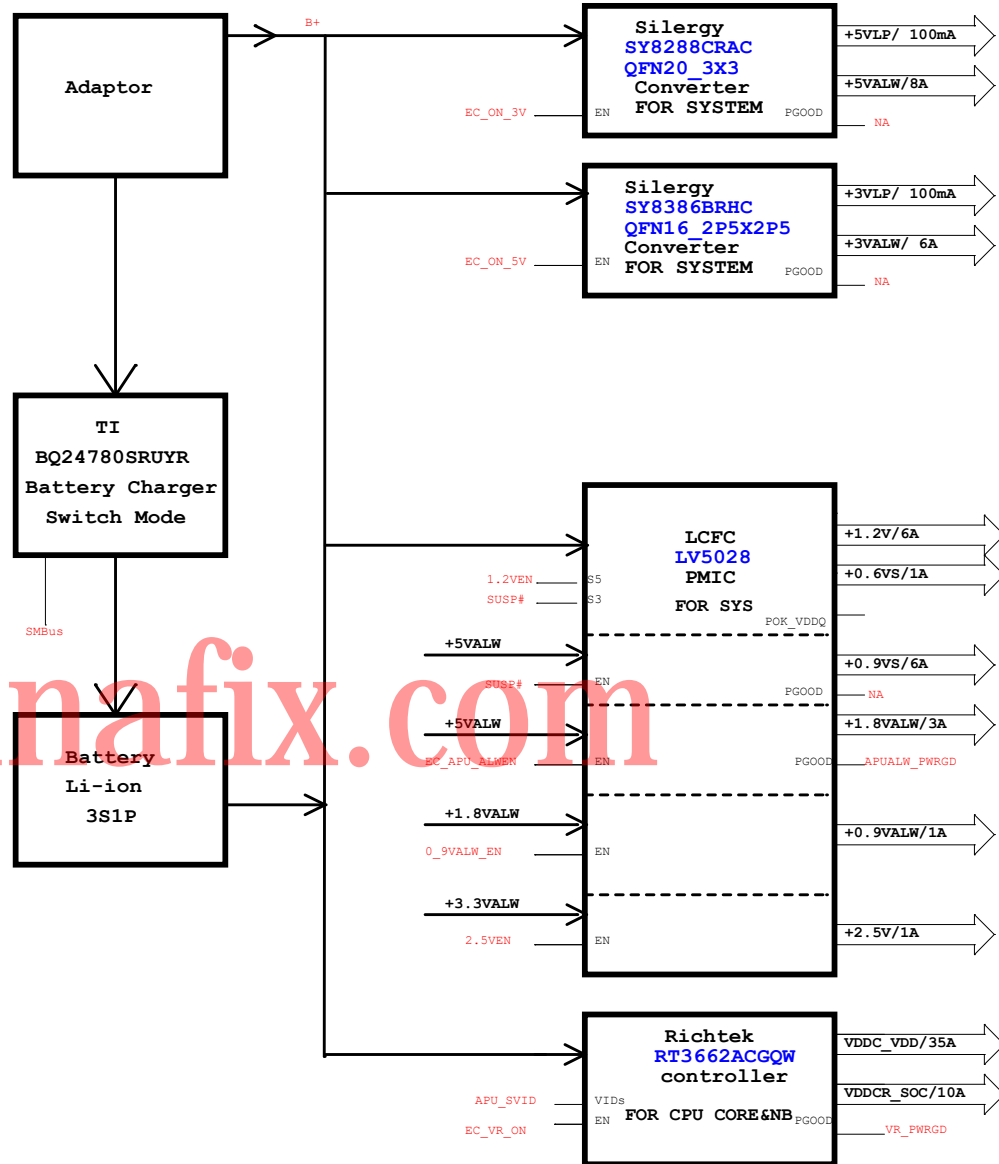
Vinafix.com

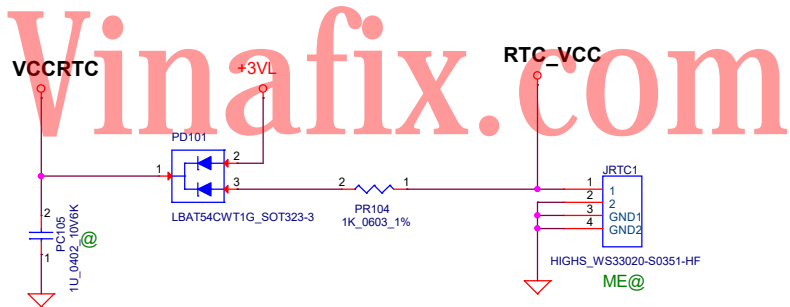
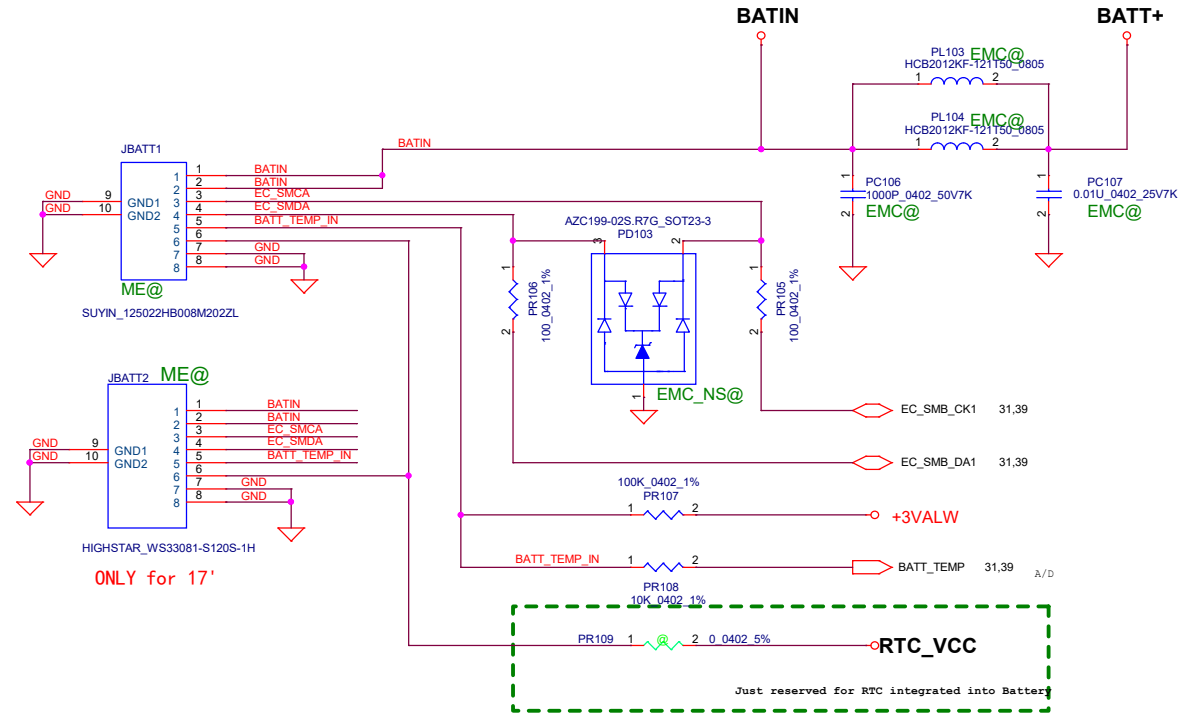
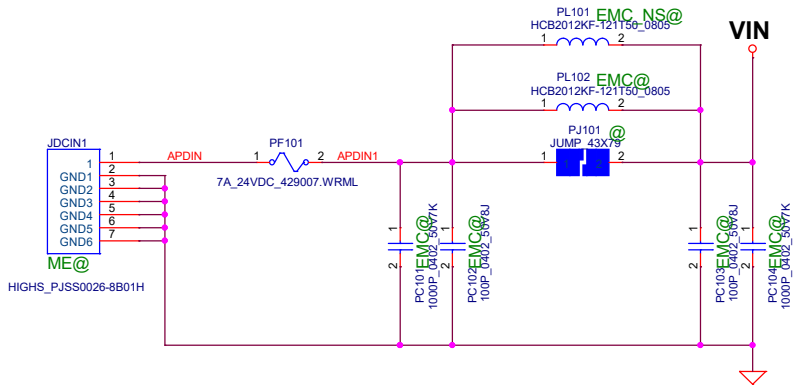
Vinafix.com

Security Classification		LC Future Center Secret Data		Title	
Issued Date		Deciphered Date		Virtual symbol	
2013/08/08		2013/08/05			
<small>THIS SHEET OF ENGINEERING DRAWING IS THE PROPRIETARY PROPERTY OF LC FUTURE CENTER, AND CONTAINS CONFIDENTIAL AND TRADE SECRET INFORMATION. THIS SHEET MAY NOT BE TRANSFERRED FROM THE CUSTODY OF THE COMPETENT DIVISION OF R&D DEPARTMENT EXCEPT AS AUTHORIZED BY LC FUTURE CENTER. NEITHER THIS SHEET NOR THE INFORMATION IT CONTAINS MAY BE USED BY OR DISCLOSED TO ANY THIRD PARTY WITHOUT PRIOR WRITTEN CONSENT OF LC FUTURE CENTER.</small>					
Size				Document Number	
Cm				GV451	
Date				Thursday, December 05, 2013	
Sheet				35 of 44	
Rev				1.0	

Vinafix.com

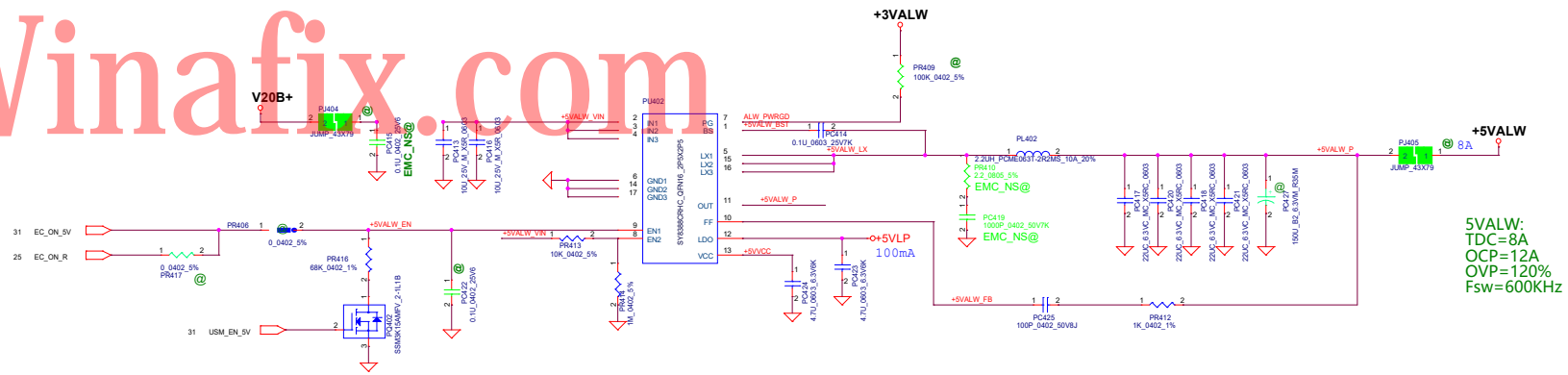
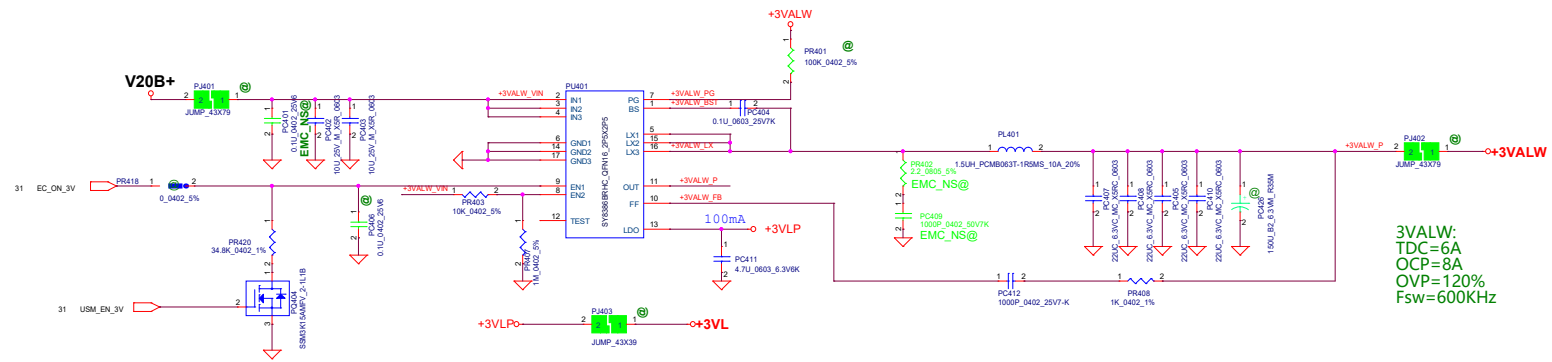
Security Classification		LC Future Center Secret Data		Title	
Issued Date		Deciphered Date		Power sequence Block	
2013/08/15		2013/08/15			
<small>THIS SHEET OF ENGINEERING DRAWING IS THE PROPRIETARY PROPERTY OF LC FUTURE CENTER, AND CONTAINS CONFIDENTIAL AND TRADE SECRET INFORMATION. THIS SHEET MAY NOT BE TRANSFERRED FROM THE CUSTODY OF THE COMPETENT DIVISION OF DEPARTMENT EXCEPT AS AUTHORIZED BY LC FUTURE CENTER. NEITHER THIS SHEET NOR THE INFORMATION IT CONTAINS MAY BE USED BY OR DISCLOSED TO ANY THIRD PARTY WITHOUT PRIOR WRITTEN CONSENT OF LC FUTURE CENTER.</small>				Size	Document Number
				Custom	GV451
				Date	Thursday, December 05, 2019
				Sheet	36 of 44
				Rev	1.0





Security Classification		LC Future Center Secret Data		Title	
Issued Date	2013/08/15	Deciphered Date	2013/08/15	DCIN / RTC	
THIS SHEET OF ENGINEERING DRAWING IS THE PROPRIETARY PROPERTY OF LC FUTURE CENTER, AND CONTAINS CONFIDENTIAL AND TRADE SECRET INFORMATION. THIS SHEET MAY NOT BE TRANSFERRED FROM THE CUSTODY OF THE COMPETENT DIVISION OF R&D DEPARTMENT EXCEPT AS AUTHORIZED BY LC FUTURE CENTER. NEITHER THIS SHEET NOR THE INFORMATION IT CONTAINS MAY BE USED BY OR DISCLOSED TO ANY THIRD PARTY WITHOUT PRIOR WRITTEN CONSENT OF LC FUTURE CENTER.				Size Custom	Document Number
				GV451	
				Date:	Thursday, December 05, 2019
				Sheet	38 of 44
				Rev	1.0

Vinafix.com



Vinafix.com

Vinafix.com

LCFC Confidential


S350 ADA IO Schematics Document

Card Reader +Audio Jack+Speaker+Power Button(Fingerprint)

2019-11-25

Vinafix.com

REV:1.0

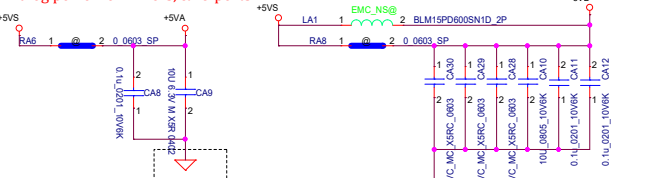
Security Classification	LC Future Center Secret Data				Title			
Issued Date	2015/08/20	Deciphered Date	2016/08/20	Cover Page				
THIS SHEET OF ENGINEERING DRAWING IS THE PROPRIETARY PROPERTY OF LC FUTURE CENTER, AND CONTAINS CONFIDENTIAL AND TRADE SECRET INFORMATION. THIS SHEET MAY NOT BE TRANSFERRED FROM THE CUSTODY OF THE COMPETENT DIVISION OF R&D DEPARTMENT EXCEPT AS AUTHORIZED BY LC FUTURE CENTER. NEITHER THIS SHEET NOR THE INFORMATION IT CONTAINS MAY BE USED BY OR DISCLOSED TO ANY THIRD PARTY WITHOUT PRIOR WRITTEN CONSENT OF LC FUTURE CENTER.				Size	Document Number	S350 ADA	Rev	1.0
				Date:	Thursday, December 05, 2019 Sheet 1 of 6			

Digital power for HDA link

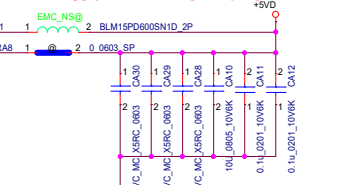


VD33STB:Power for combo jack depop circuit at system shutdown mode.
 AVDD1:Analog power for mixers ,IO ports
 DVDD-I0:Digital power for HDA link
 DVDD:Digital power for digital I/O circuit
 AVDD2:Analog power for DACs ,ADCs
 PVDD1,PVDD2:Power supply for full-bridge left and right channel

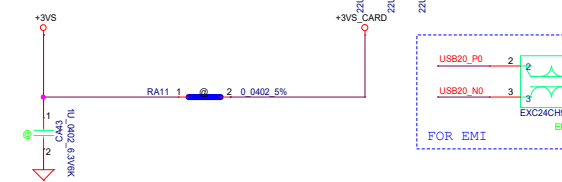
Analog power for mixers, & IO ports



Power supply for full-bridge left/right channel

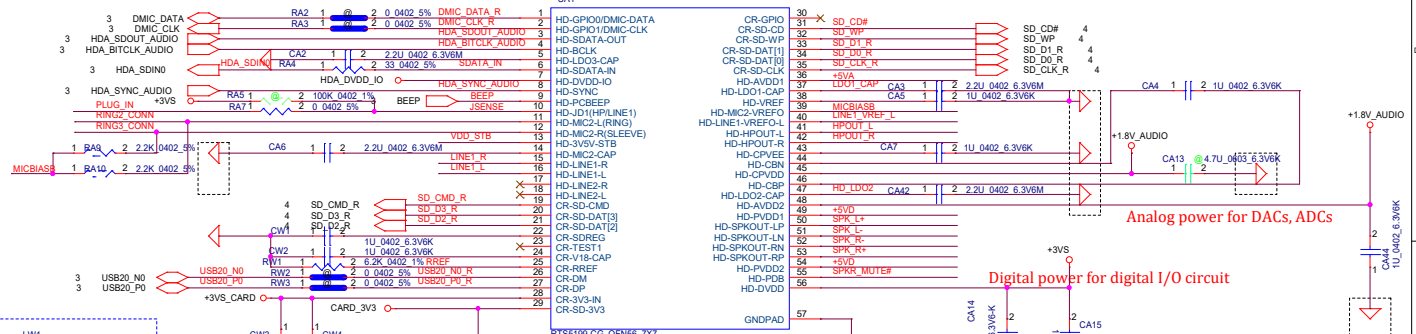


Power for CARD Reader controller



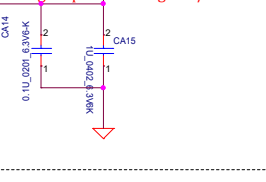
Power for combo jack depop circuit at system shutdown mode

To solve the background noise while combojack connecting to an active speaker and system entry into S3/S4/S5 without analog power.

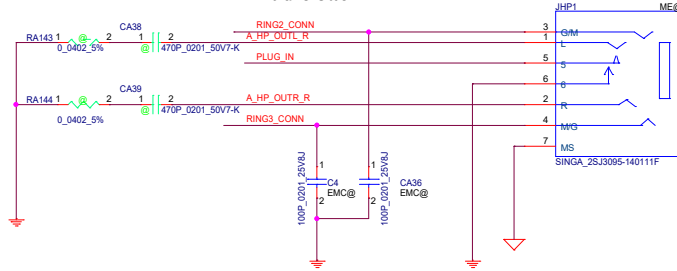


Analog power for DACs, ADCs

Digital power for digital I/O circuit



Audio Jack

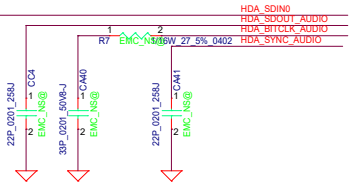
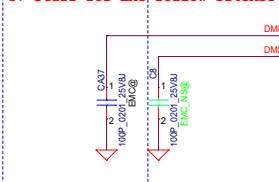


add for EMC follow S145AST

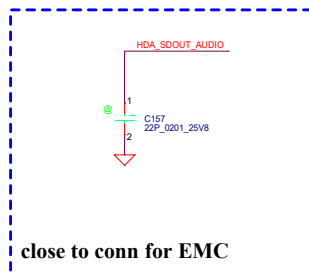
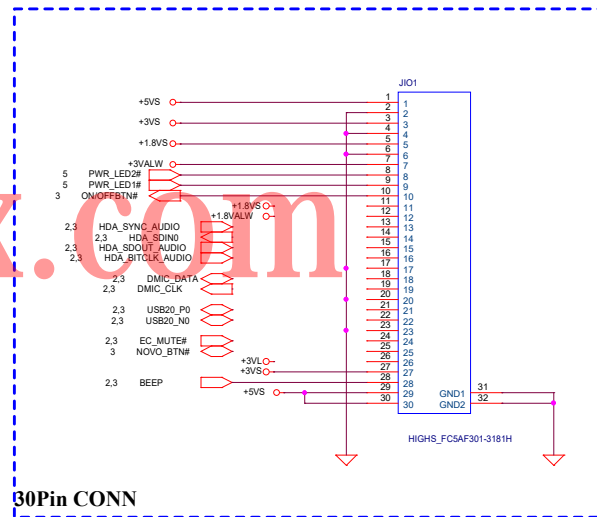
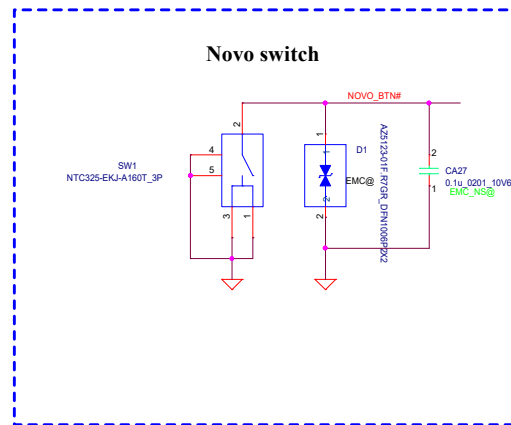
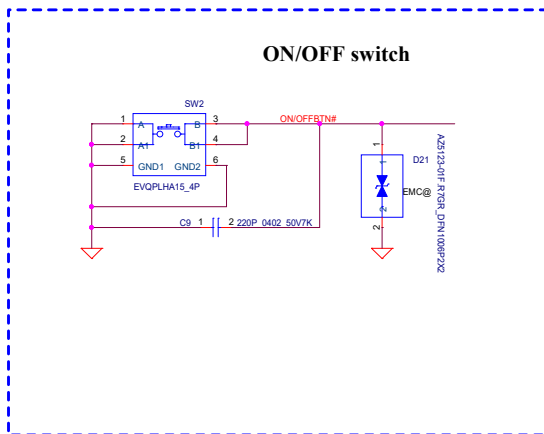
v0.2 change to 80ohm/100MHz bead + 2200pF for EMC

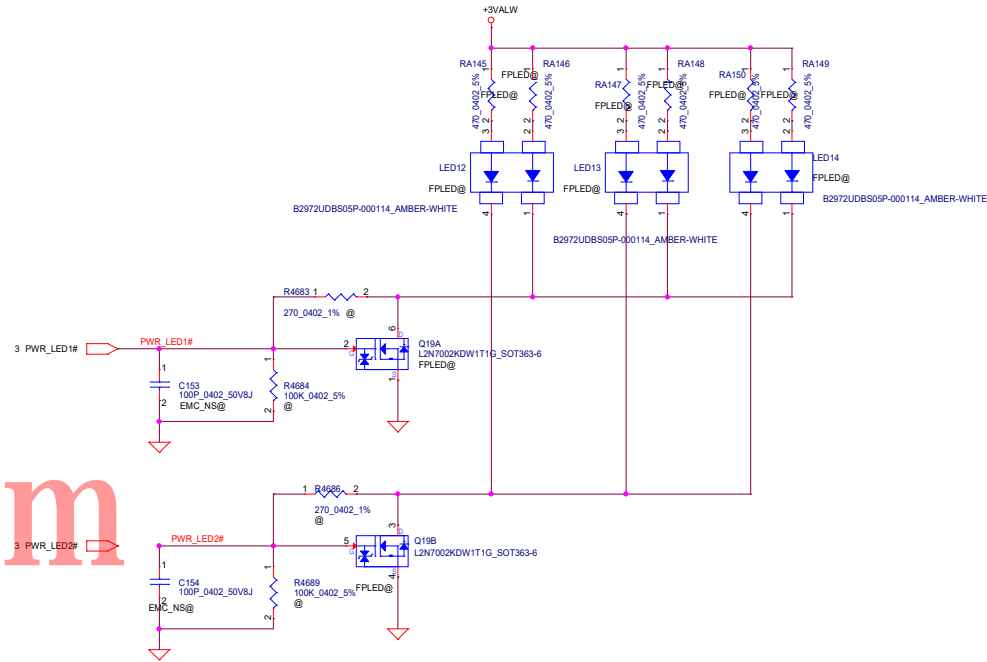
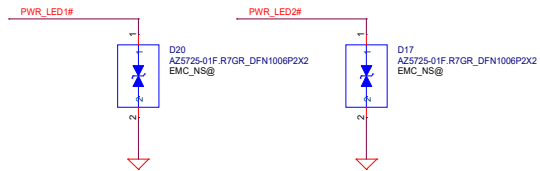
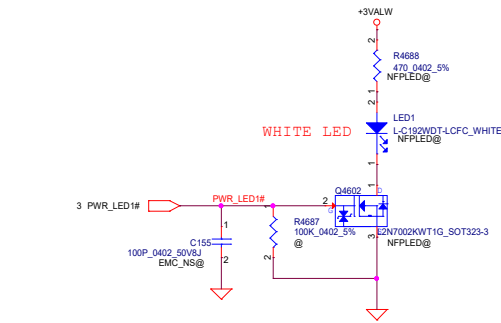
For EMI close codec

C7 stuff for EMC follow S145AST

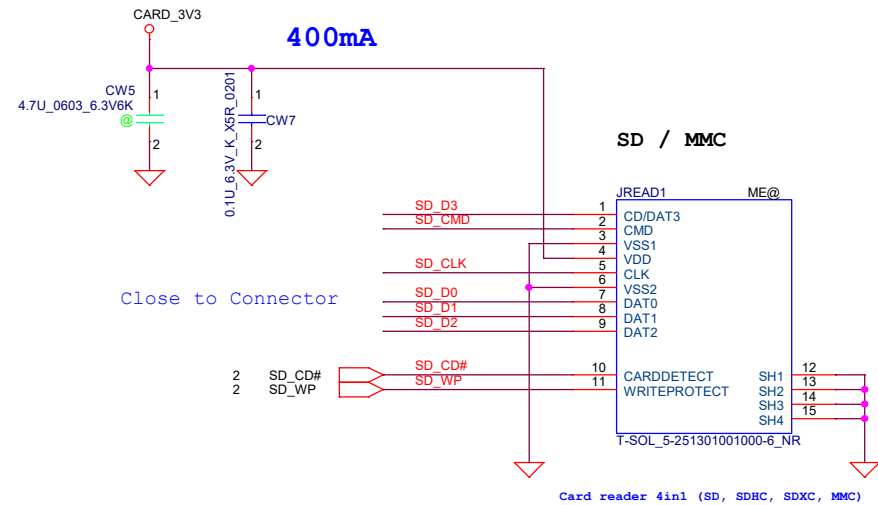
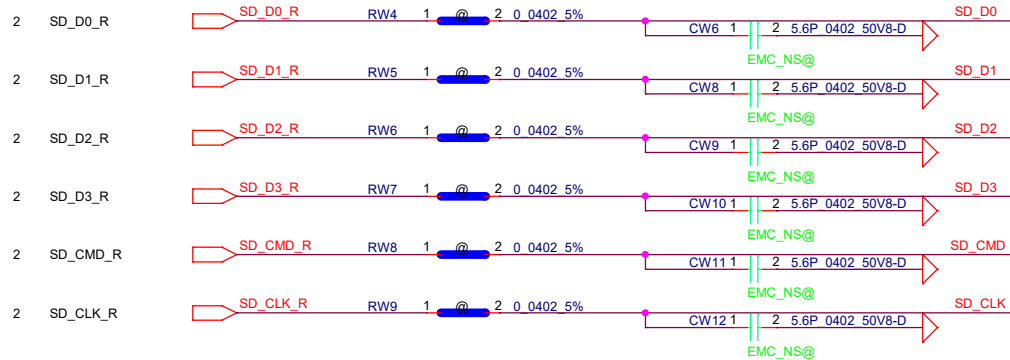


Security Classification		LC Future Center Secret Data		Title	
Issued Date	2015/08/20	Deciphered Date	2016/08/20	Cardreader	
THIS SHEET OF ENGINEERING DRAWING IS THE PROPRIETARY PROPERTY OF LC FUTURE CENTER, AND CONTAINS CONFIDENTIAL AND TRADE SECRET INFORMATION. THIS SHEET MAY NOT BE TRANSFERRED FROM THE CUSTODY OF THE COMPETENT DIVISION OF RAD DEPARTMENT EXCEPT AS AUTHORIZED BY LC FUTURE CENTER. NEITHER THIS INFORMATION IT CONTAINS MAY BE USED BY OR DISCLOSED TO ANY THIRD PARTY WITHOUT PRIOR WRITTEN CONSENT OF LC FUTURE CENTER.				Size	Document Number
					S350 ADA
				Date	Thursday, December 05, 2019
				Sheet	2 of 8



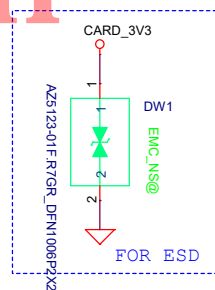


Vinafix.com

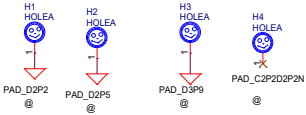
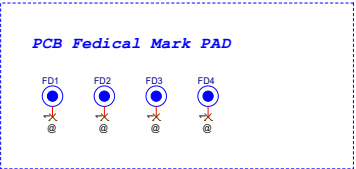


Vinafix.com

Close to Connector



Security Classification		LC Future Center Secret Data		Title	
Issued Date	2015/08/20	Deciphered Date	2016/08/20	CARD READER	
THIS SHEET OF ENGINEERING DRAWING IS THE PROPRIETARY PROPERTY OF LC FUTURE CENTER, AND CONTAINS CONFIDENTIAL AND TRADE SECRET INFORMATION. THIS SHEET MAY NOT BE TRANSFERRED FROM THE CUSTODY OF THE COMPETENT DIVISION OF R&D DEPARTMENT EXCEPT AS AUTHORIZED BY LC FUTURE CENTER. NEITHER THIS SHEET NOR THE INFORMATION IT CONTAINS MAY BE USED BY OR DISCLOSED TO ANY THIRD PARTY WITHOUT PRIOR WRITTEN CONSENT OF LC FUTURE CENTER.				Size	Rev
				Document Number	1.0
				S350 ADA	
				Date	Thursday, December 05, 2019
				Sheet	4 of 6



Vinafix.com

Security Classification		LC Future Center Secret Data		Title	
Issued Date		Deciphered Date		Hole	
2015/08/20		2016/08/20		Size	
Document Number		Rev		1.0	
Date		Thursday, December 05, 2018		Sheet 5 of 6	

THIS SHEET OF ENGINEERING DRAWING IS THE PROPRIETARY PROPERTY OF LC FUTURE CENTER, AND CONTAINS CONFIDENTIAL AND TRADE SECRET INFORMATION. THIS SHEET MAY NOT BE TRANSFERRED FROM THE CUSTODY OF THE COMPETENT DIVISION OF R&D DEPARTMENT EXCEPT AS AUTHORIZED BY LC FUTURE CENTER. NEITHER THIS SHEET NOR THE INFORMATION IT CONTAINS MAY BE USED BY OR DISCLOSED TO ANY THIRD PARTY WITHOUT PRIOR WRITTEN CONSENT OF LC FUTURE CENTER.

LCFC

ZZZ1

NS-C823

DA800015210

PCB_MB

Vinafix.com

Security Classification		LC Future Center Secret Data		Title	
Issued Date		2015/08/20	Deciphered Date	2016/08/20	Virtual symbol
<div>THIS SHEET OF ENGINEERING DRAWING IS THE PROPRIETARY PROPERTY OF LC FUTURE CENTER, AND CONTAINS CONFIDENTIAL AND TRADE SECRET INFORMATION. THIS SHEET MAY NOT BE TRANSFERRED FROM THE CUSTODY OF THE COMPETENT DIVISION OF R&D DEPARTMENT EXCEPT AS AUTHORIZED BY LC FUTURE CENTER. NEITHER THIS SHEET NOR THE INFORMATION IT CONTAINS MAY BE USED BY OR DISCLOSED TO ANY THIRD PARTY WITHOUT PRIOR WRITTEN CONSENT OF LC FUTURE CENTER.</div>					<div><div>Size</div><div>C</div></div> <div><div>Document Number</div><div>S350 ADA</div></div> <div><div>Date</div><div>Thursday, December 03, 2016</div></div>
					<div><div>Rev</div><div>1.0</div></div>
					<div><div>Sheet</div><div>6 of 6</div></div>

LCFC Confidential


S350 ADA IO Schematics Document

Card Reader +Audio Jack+Speaker+Power Button(Fingerprint)

2019-11-25

Vinafix.com

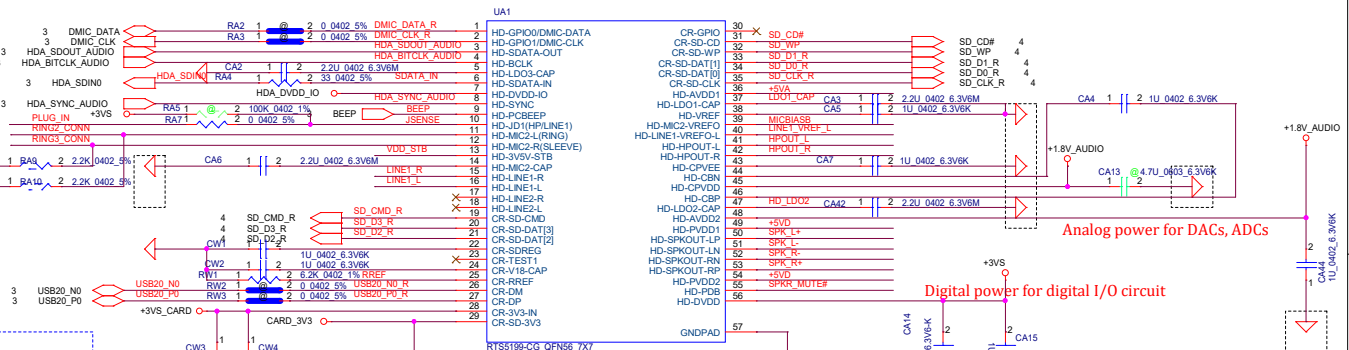
REV:1.0

Security Classification	LC Future Center Secret Data			Title		
Issued Date	2015/08/20	Deciphered Date	2016/08/20	Cover Page		
THIS SHEET OF ENGINEERING DRAWING IS THE PROPRIETARY PROPERTY OF LC FUTURE CENTER, AND CONTAINS CONFIDENTIAL AND TRADE SECRET INFORMATION. THIS SHEET MAY NOT BE TRANSFERRED FROM THE CUSTODY OF THE COMPETENT DIVISION OF R&D DEPARTMENT EXCEPT AS AUTHORIZED BY LC FUTURE CENTER. NEITHER THIS SHEET NOR THE INFORMATION IT CONTAINS MAY BE USED BY OR DISCLOSED TO ANY THIRD PARTY WITHOUT PRIOR WRITTEN CONSENT OF LC FUTURE CENTER.				Size Custom	Document Number S350 ADA	Rev 1.0
				Date:	Thursday, December 05, 2019 Sheet 1 of 6	

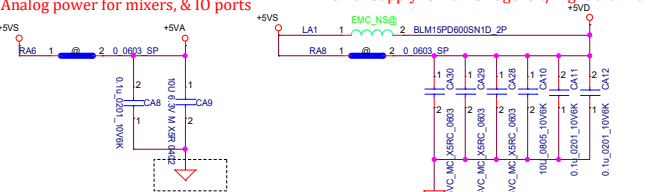
Digital power for HDA link



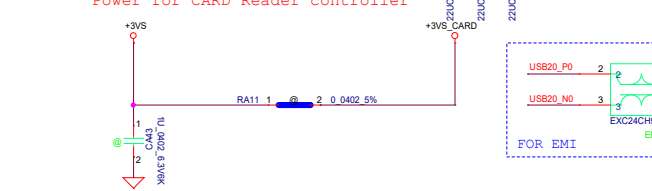
VDD33TB:Power for combo jack depop circuit at system shutdown mode.
AVDD1:Analog power for mixers ,IO ports
DVDD-DIO:Digital power for HDA link
DVDD:Digital power for digital I/O circuit
AVDD2:Analog power for DACs ,ADCs
PVDD1,PVDD2:Power supply for full-bridge left and right channel



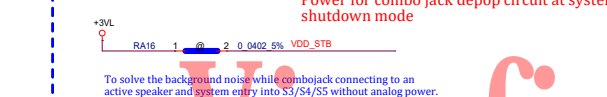
Analog power for mixers, & IO ports



Power for CARD Reader controller

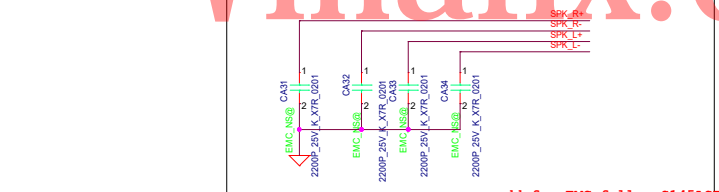


Power for combo jack depop circuit at system shutdown mode

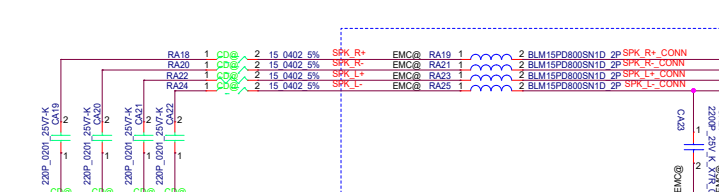


To solve the background noise while combojack connecting to an active speaker and system entry into S3/S4/S5 without analog power.

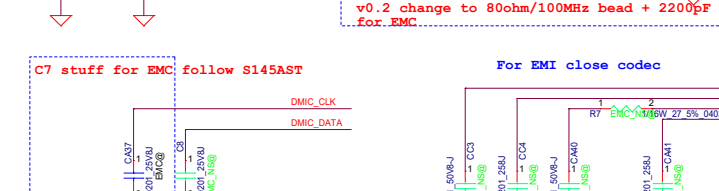
Power for DACs, ADCs



Digital power for digital I/O circuit



Audio Jack



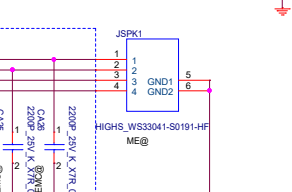
Audio Jack



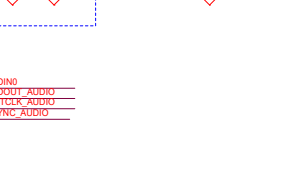
Audio Jack



Audio Jack



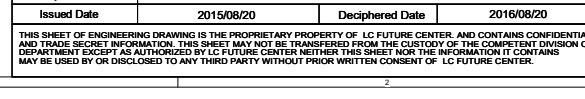
Audio Jack



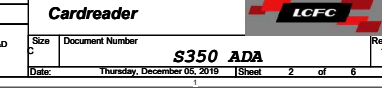
Audio Jack



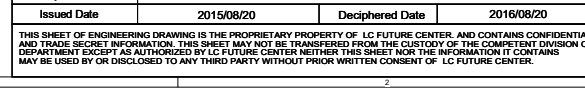
Audio Jack



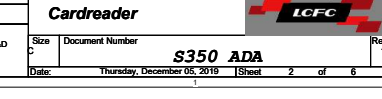
Audio Jack



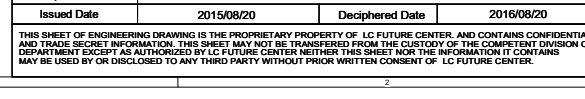
Audio Jack



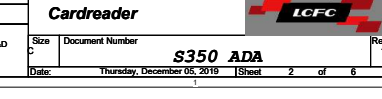
Audio Jack



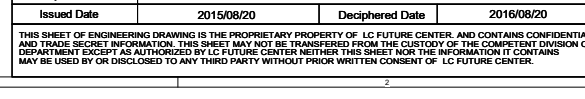
Audio Jack



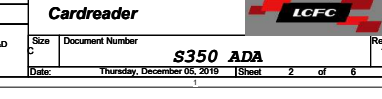
Audio Jack



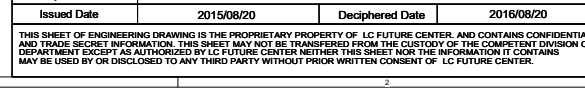
Audio Jack



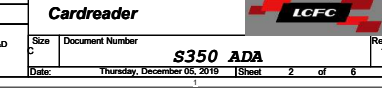
Audio Jack



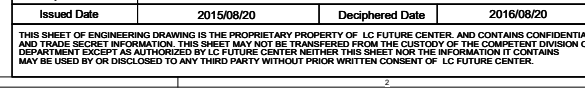
Audio Jack



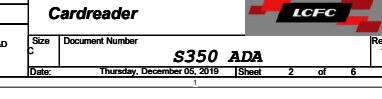
Audio Jack



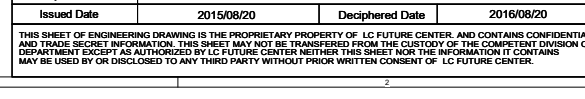
Audio Jack



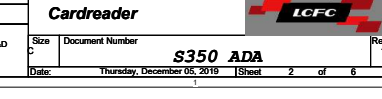
Audio Jack



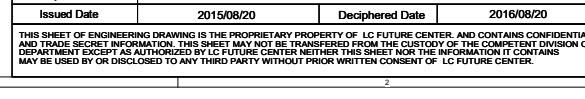
Audio Jack



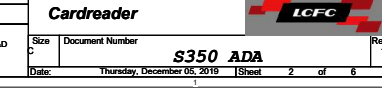
Audio Jack



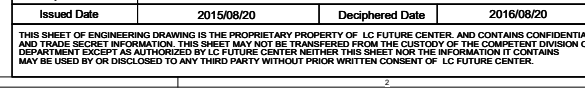
Audio Jack



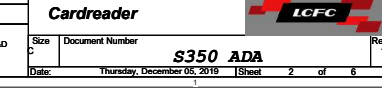
Audio Jack



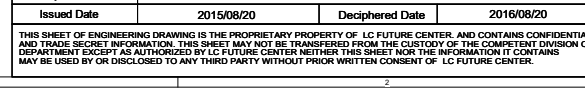
Audio Jack



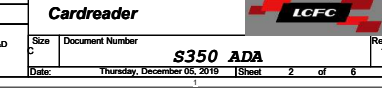
Audio Jack



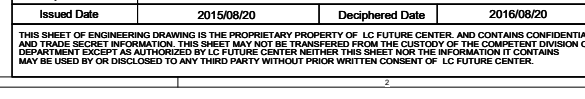
Audio Jack



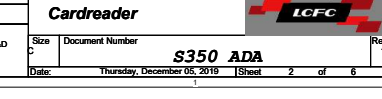
Audio Jack



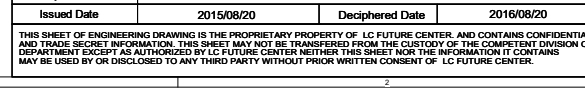
Audio Jack



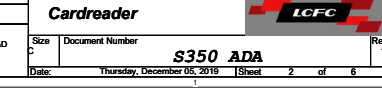
Audio Jack



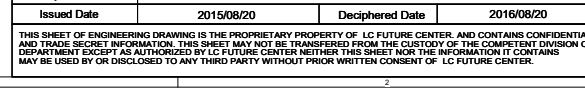
Audio Jack



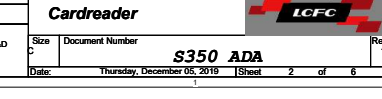
Audio Jack



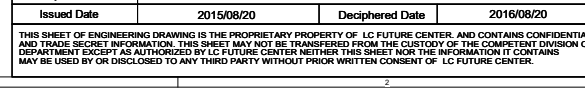
Audio Jack



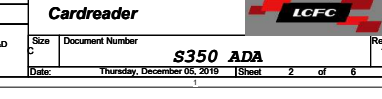
Audio Jack



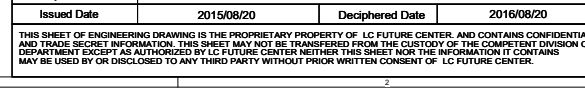
Audio Jack



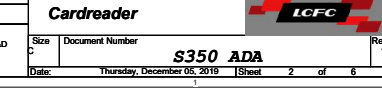
Audio Jack



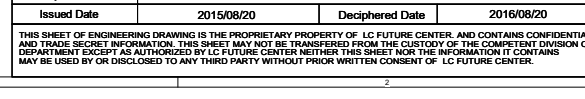
Audio Jack



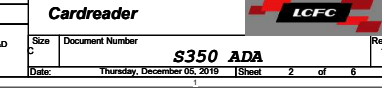
Audio Jack



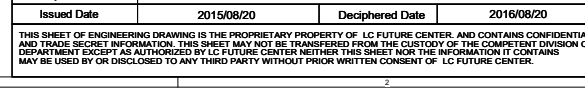
Audio Jack



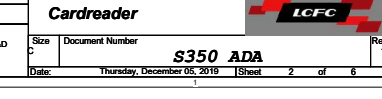
Audio Jack



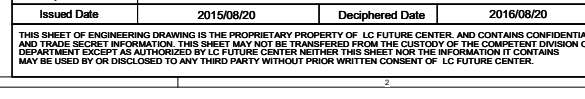
Audio Jack



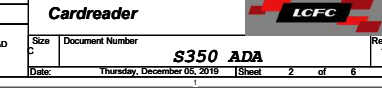
Audio Jack



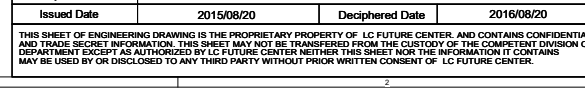
Audio Jack



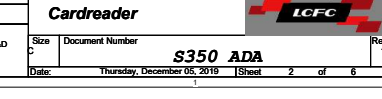
Audio Jack



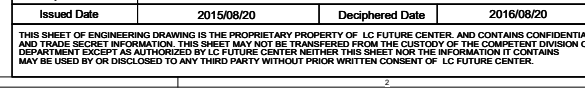
Audio Jack



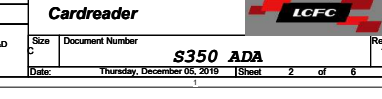
Audio Jack



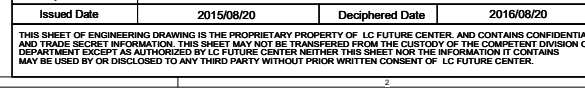
Audio Jack



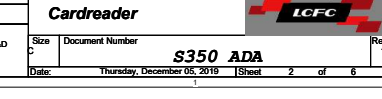
Audio Jack



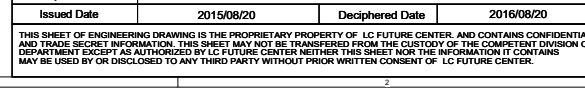
Audio Jack



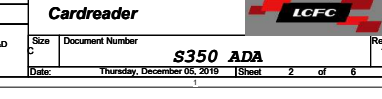
Audio Jack



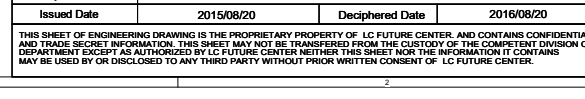
Audio Jack



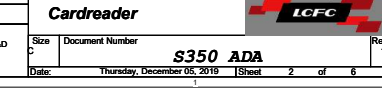
Audio Jack



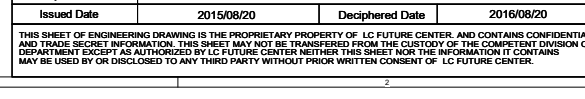
Audio Jack



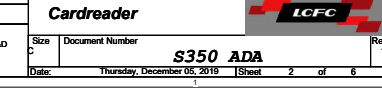
Audio Jack



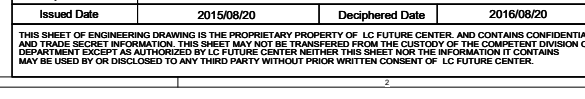
Audio Jack



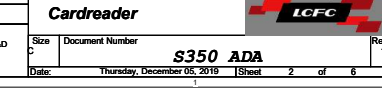
Audio Jack



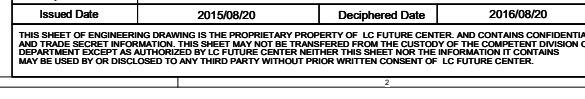
Audio Jack



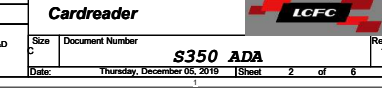
Audio Jack



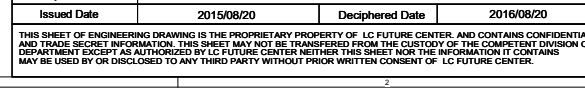
Audio Jack

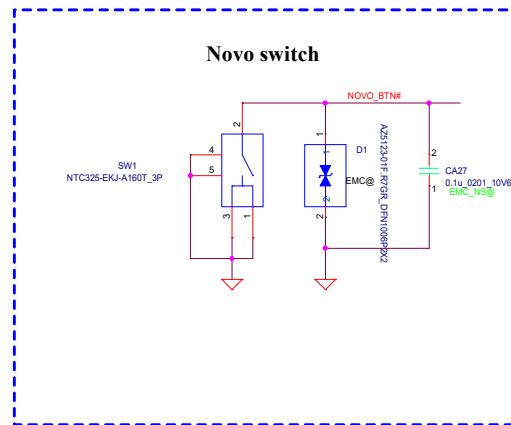
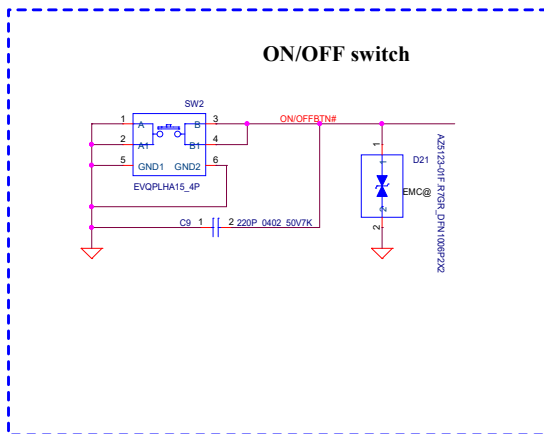


Audio Jack

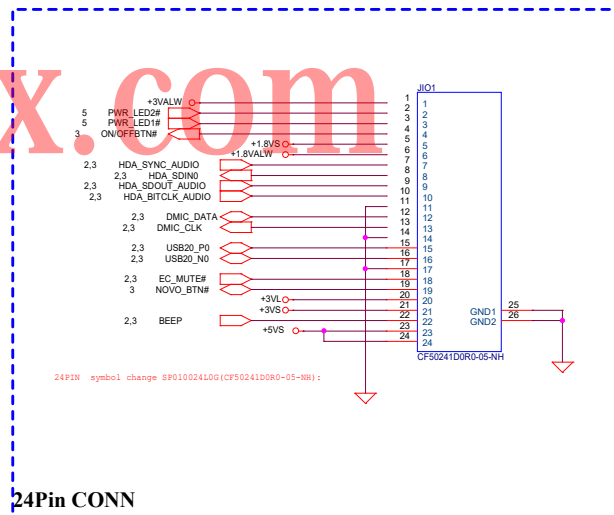


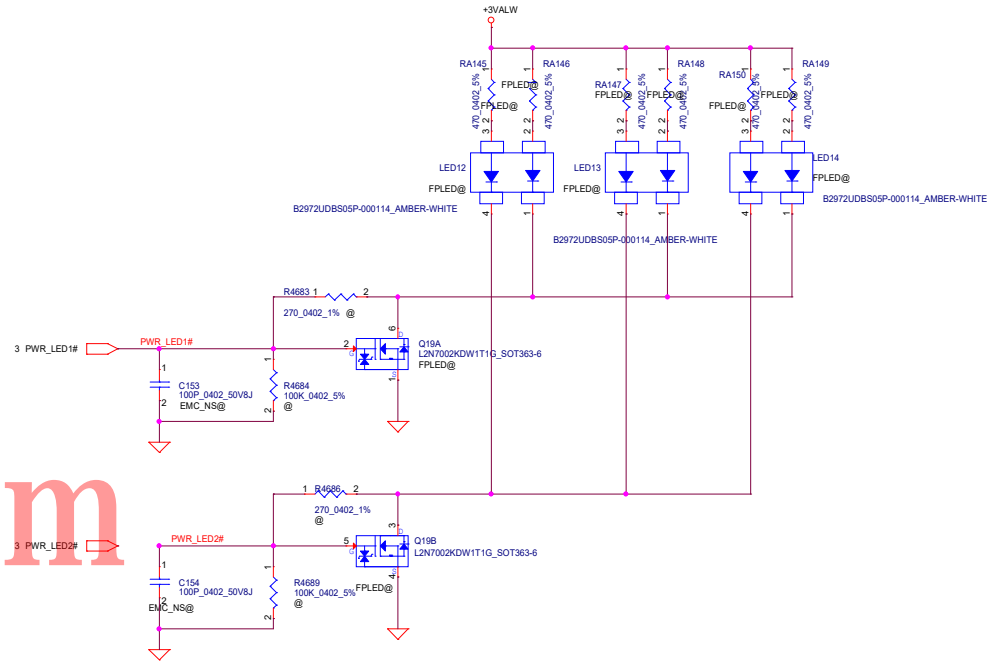
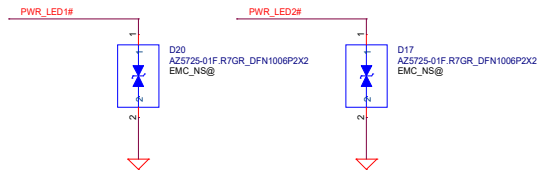
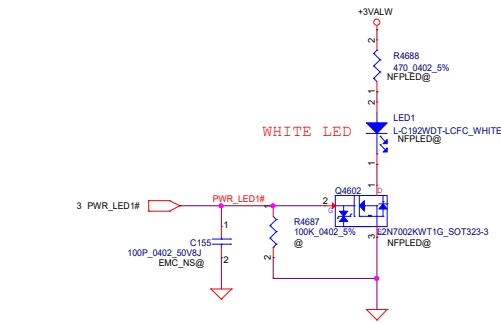
Audio Jack



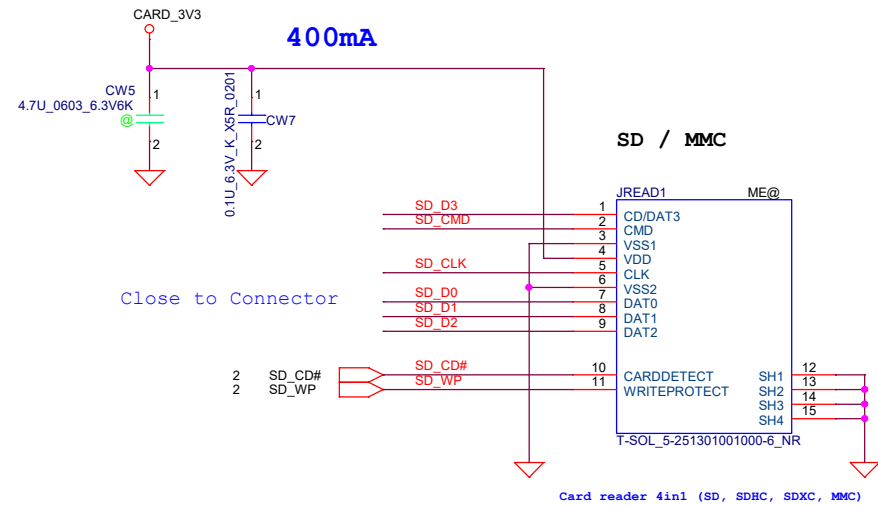
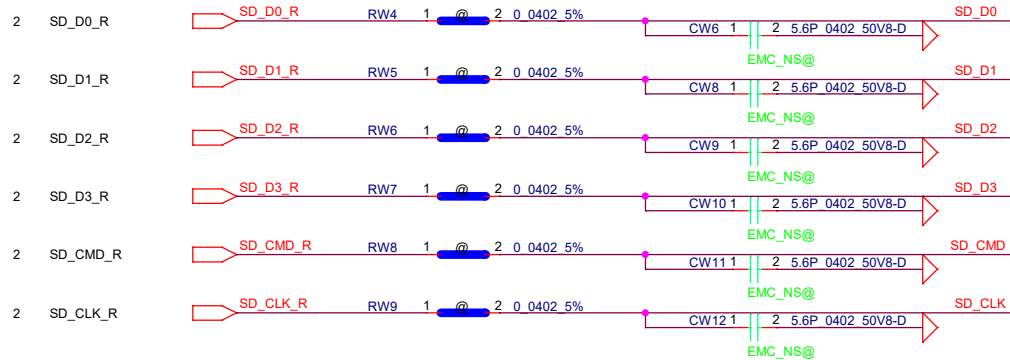


Vinafix.com



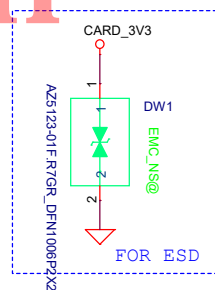



Vinafix.com



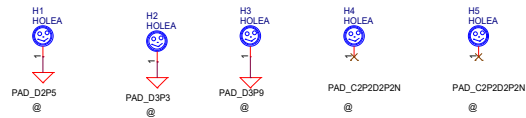
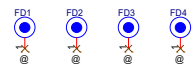
Vinafix.com

Close to Connector



Security Classification		LC Future Center Secret Data		Title CARD READER			
Issued Date	2015/08/20	Deciphered Date	2016/08/20				
THIS SHEET OF ENGINEERING DRAWING IS THE PROPRIETARY PROPERTY OF LC FUTURE CENTER, AND CONTAINS CONFIDENTIAL AND TRADE SECRET INFORMATION. THIS SHEET MAY NOT BE TRANSFERRED FROM THE CUSTODY OF THE COMPETENT DIVISION OF R&D DEPARTMENT EXCEPT AS AUTHORIZED BY LC FUTURE CENTER. NEITHER THIS SHEET NOR THE INFORMATION IT CONTAINS MAY BE USED BY OR DISCLOSED TO ANY THIRD PARTY WITHOUT PRIOR WRITTEN CONSENT OF LC FUTURE CENTER.				Size	Document Number	Rev	
				5	S350 ADA	1.0	
				Date:	Thursday, December 05, 2019	Sheet	4 of 6

PCB Fedical Mark PAD



Vinafix.com

Security Classification		LC Future Center Secret Data		Title	
Issued Date		Deciphered Date		Hole	
2015/08/20		2016/08/20		S350 ADA	
THIS SHEET OF ENGINEERING DRAWING IS THE PROPRIETARY PROPERTY OF LC FUTURE CENTER, AND CONTAINS CONFIDENTIAL AND TRADE SECRET INFORMATION. THIS SHEET MAY NOT BE TRANSFERRED FROM THE CUSTODY OF THE COMPETENT DIVISION OF R&D DEPARTMENT EXCEPT AS AUTHORIZED BY LC FUTURE CENTER. NEITHER THIS SHEET NOR THE INFORMATION IT CONTAINS MAY BE USED BY OR DISCLOSED TO ANY THIRD PARTY WITHOUT PRIOR WRITTEN CONSENT OF LC FUTURE CENTER.		Size		Rev	
		C		1.0	
Date		Thursday, December 05, 2018		Sheet 5 of 6	

ZZZ1

NS-C822

DA800015110

PCB_MB

Vinafix.com

LCFC Confidential


S350 ADA IO Schematics Document

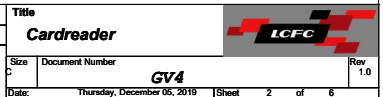
Card Reader +Audio Jack+Speaker+Power Button(Fingerprint)

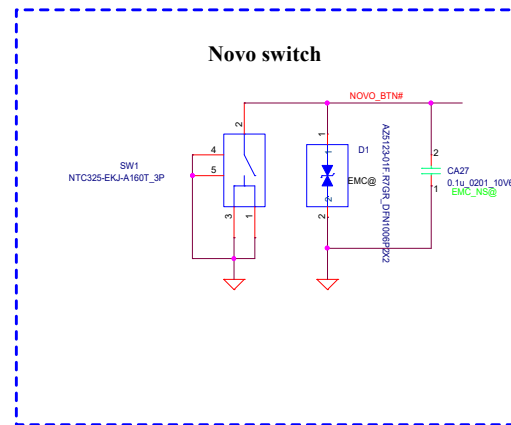
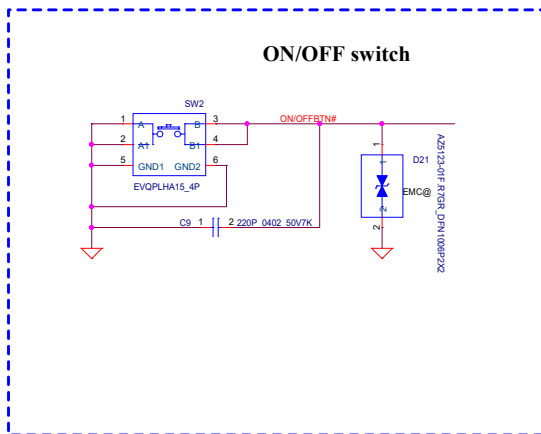
2019-11-25

Vinafix.com

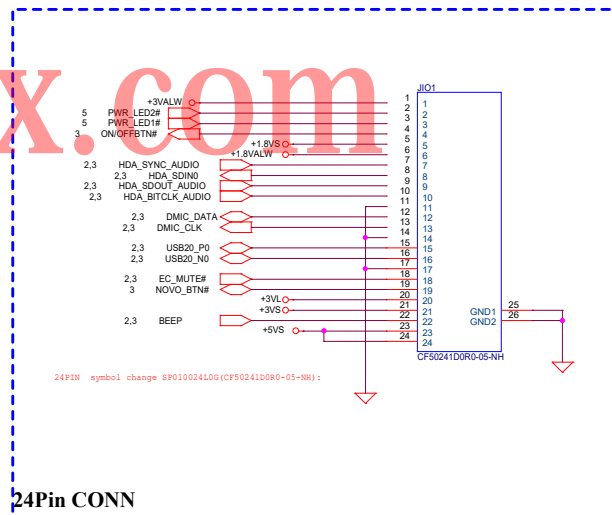
REV:1.0

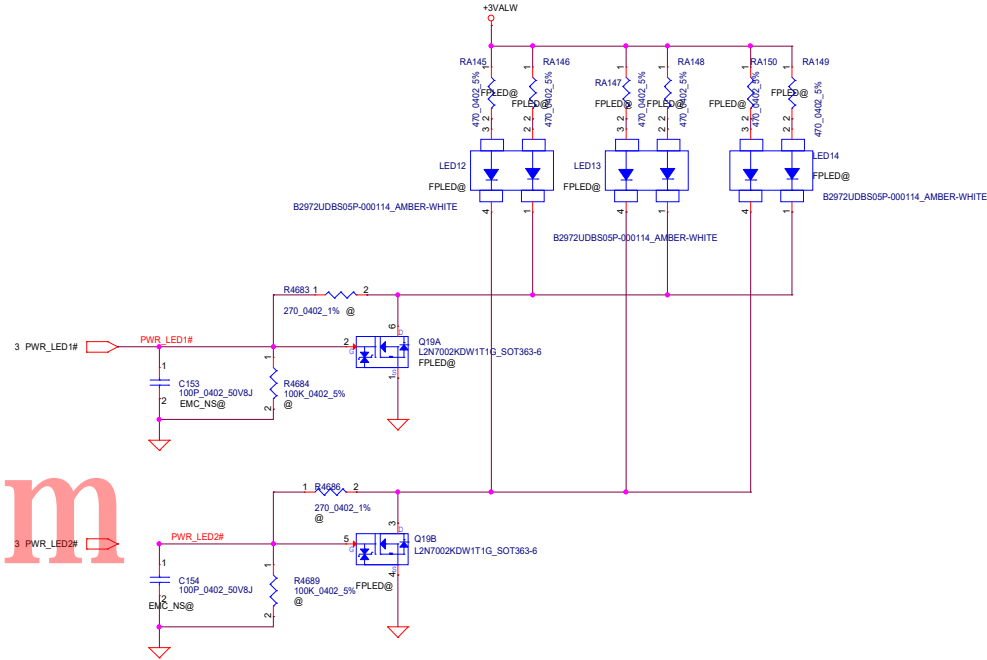
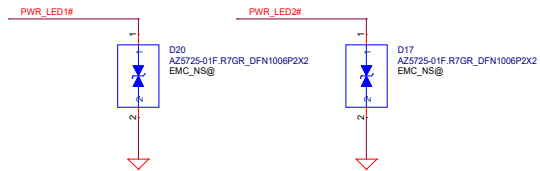
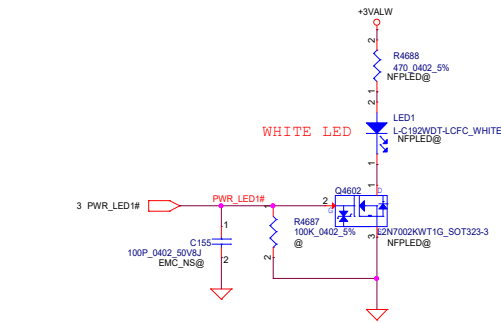
Security Classification	LC Future Center Secret Data				Title			
Issued Date	2015/08/20	Deciphered Date	2016/08/20	Cover Page				
<small>THIS SHEET OF ENGINEERING DRAWING IS THE PROPRIETARY PROPERTY OF LC FUTURE CENTER, AND CONTAINS CONFIDENTIAL AND TRADE SECRET INFORMATION. THIS SHEET MAY NOT BE TRANSFERRED FROM THE CUSTODY OF THE COMPETENT DIVISION OF DEPARTMENT EXCEPT AS AUTHORIZED BY LC FUTURE CENTER. NEITHER THIS SHEET NOR THE INFORMATION IT CONTAINS MAY BE USED BY OR DISCLOSED TO ANY THIRD PARTY WITHOUT PRIOR WRITTEN CONSENT OF LC FUTURE CENTER.</small>				Size	Document Number	GV4	Rev	
				Custom			1.0	
Date:				Thursday, December 05, 2019 Sheet 1 of 6				



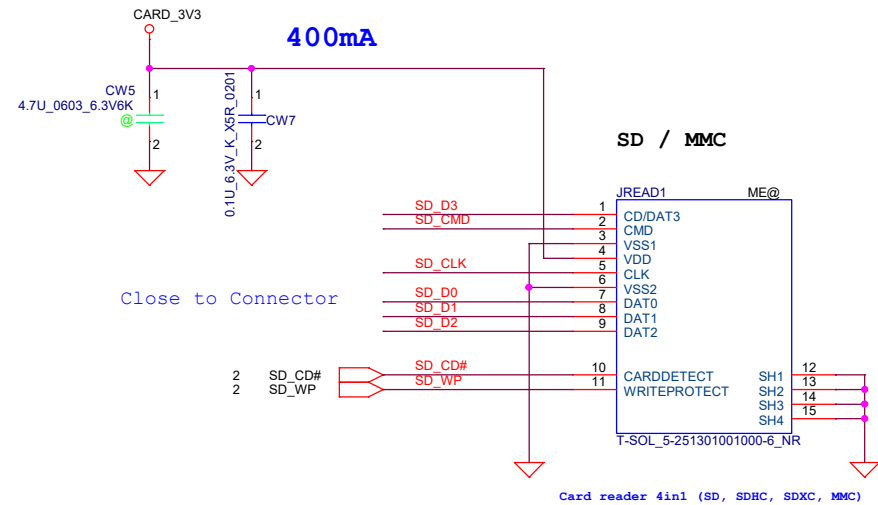
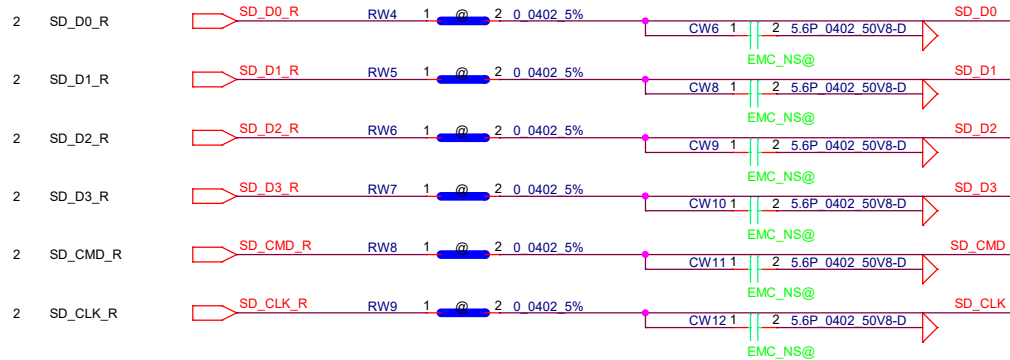


Vinafix.com



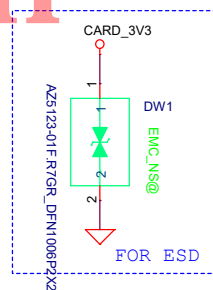



Vinafix.com

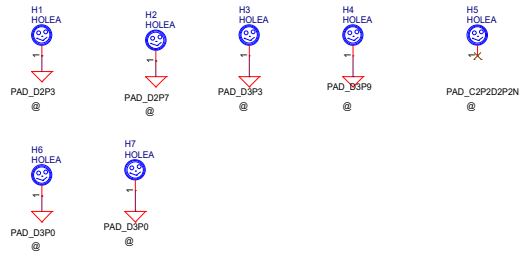
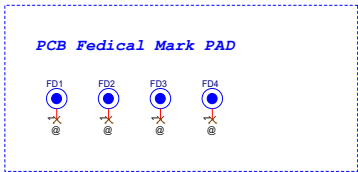


Vinafix.com

Close to Connector



Security Classification		LC Future Center Secret Data		Title		
Issued Date	2015/08/20	Deciphered Date	2016/08/20	CARD READER		
THIS SHEET OF ENGINEERING DRAWING IS THE PROPRIETARY PROPERTY OF LC FUTURE CENTER. AND CONTAINS CONFIDENTIAL AND TRADE SECRET INFORMATION. THIS SHEET MAY NOT BE TRANSFERRED FROM THE CUSTODY OF THE COMPETENT DIVISION OF R&D DEPARTMENT EXCEPT AS AUTHORIZED BY LC FUTURE CENTER NEITHER THIS SHEET NOR THE INFORMATION IT CONTAINS MAY BE USED BY OR DISCLOSED TO ANY THIRD PARTY WITHOUT PRIOR WRITTEN CONSENT OF LC FUTURE CENTER.						
Size	Document Number			GV4		Rev
5						1.0
Date:	Thursday, December 05, 2019			Sheet	4	of 6



Vinafix.com

ZZZ1

NS-C621

DA80015010

PCB_MB

Vinafix.com